



District Star and MAP Data



Presented to the Board of Education

Dr. Allison Deno, Chief of Schools

Rachelle Douglas, Director of Assessment

September 10, 2024



SLPS Strategic Values



Highly Effective
Educators and
Leaders



Authentic Family
and Community
Partnership



Equitable and
Multiple Sources
of Data



Joyful and
Engaged
Students



Personalized
Supports and
Innovative Pathways



College and
Career Ready
Critical Thinkers

Values Across Our Student Goals



3rd Grade Reading

Growth and Proficiency



3rd Grade Math

Growth and Proficiency



College and Career Readiness

High School Students Prepared for Workforce and Post-Secondary Employment



Culture and Climate

Student Wellbeing

Student Success Goals



Portrait of a Graduate



College & Career Ready

Change Agent

Critical Thinker

Communicator

Competent

Culturally Aware

Collaborator



District Level Data Overview



- Star Reading and Math
- MAP GLA (Grade-Level Assessment)
 - ELA (English Language Arts)
 - Math
- MAP EOC (End-of-Course)
 - Algebra 1
 - Biology
 - English II
 - Government
- Cohort
- Historical



Star Reading and Math



Who

- All students, kindergarten through 12th grade

What

- Computer adaptive reading and math assessments

When

- Fall, Winter, and Spring

Why

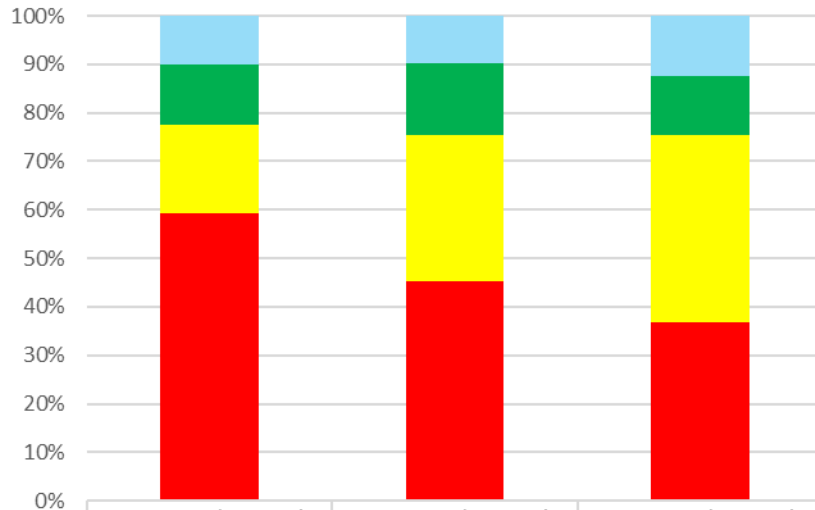
- Measures student growth and achievement
- Identifies educational next steps
- Projects to MAP GLA performance level



Star Cohort Data 5th Grade



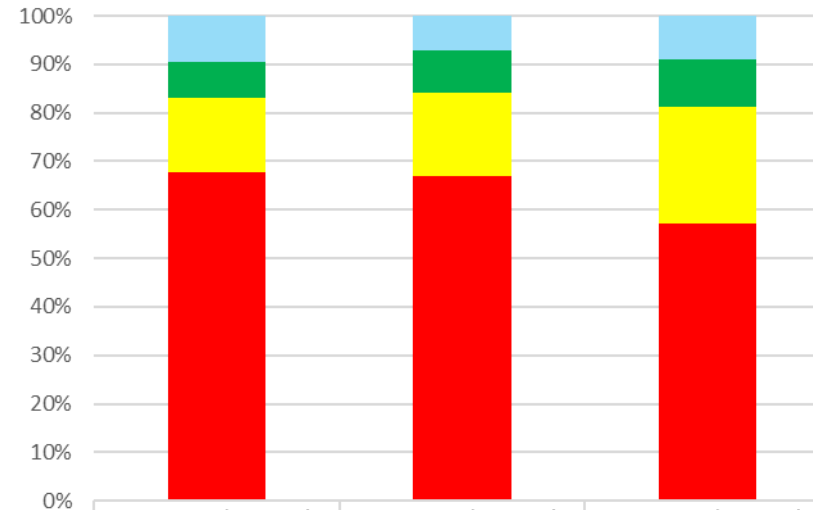
Star Reading - 2024 Grade 5



Advanced	10.1%	9.7%	12.4%
Proficient	12.3%	14.9%	12.3%
Basic	18.3%	30.2%	38.6%
Below Basic	59.3%	45.2%	36.7%

Below Basic Basic Proficient Advanced

Star Math - 2024 Grade 5



Advanced	9.5%	7.1%	8.9%
Proficient	7.6%	8.8%	10.0%
Basic	15.3%	17.2%	24.0%
Below Basic	67.7%	66.9%	57.1%

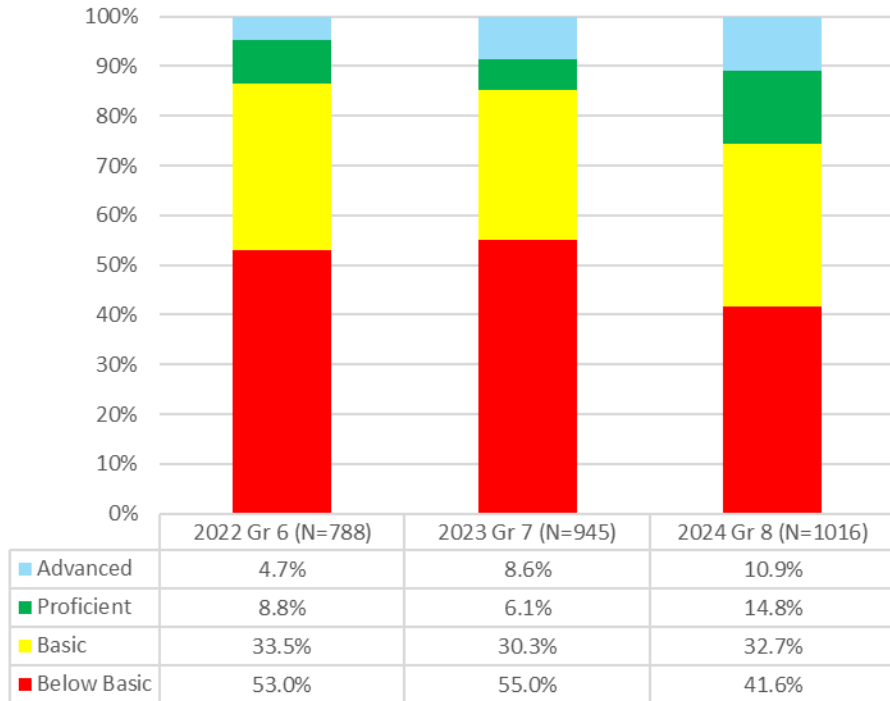
Below Basic Basic Proficient Advanced



Star Cohort Data 8th Grade

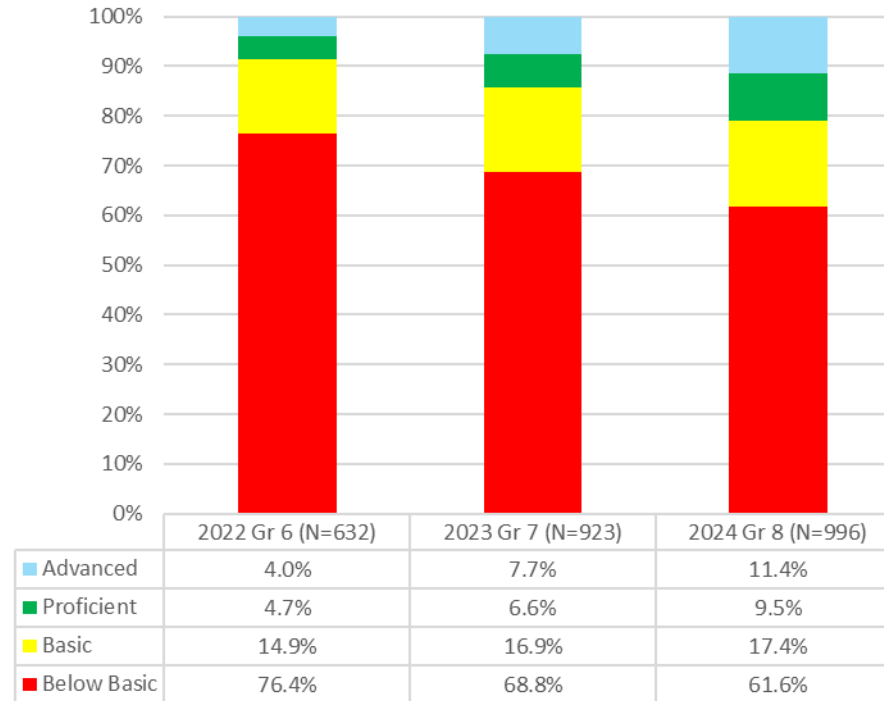


Star Reading - 2024 Grade 8



Below Basic Basic Proficient Advanced

Star Math - 2024 Grade 8



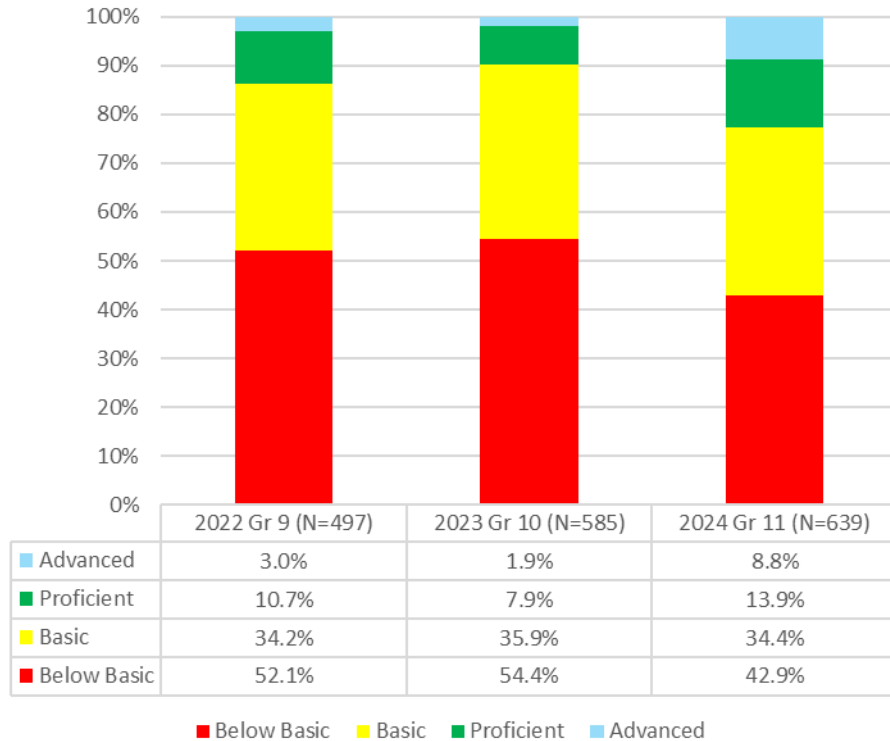
Below Basic Basic Proficient Advanced



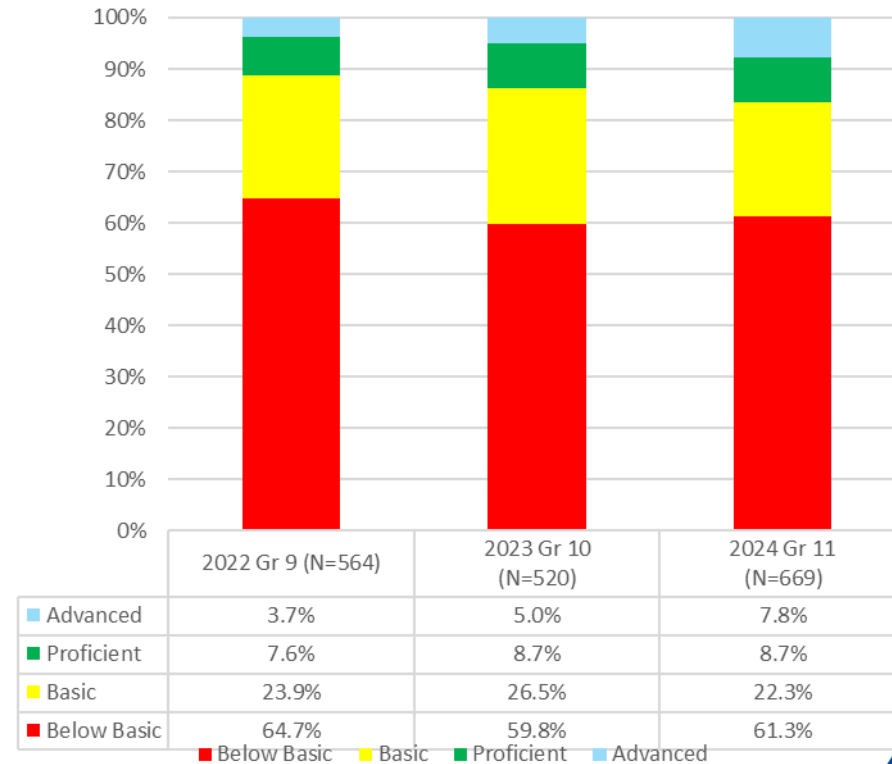
Star Cohort Data 11th Grade



Star Reading - 2024 Grade 11



Star Math - 2024 Grade 11



Missouri Assessment Program (MAP – Grade Level Assessments)

3rd – 8th Grade students

- ELA (English Language Arts)
- Math



MAP GLA Achievement Levels

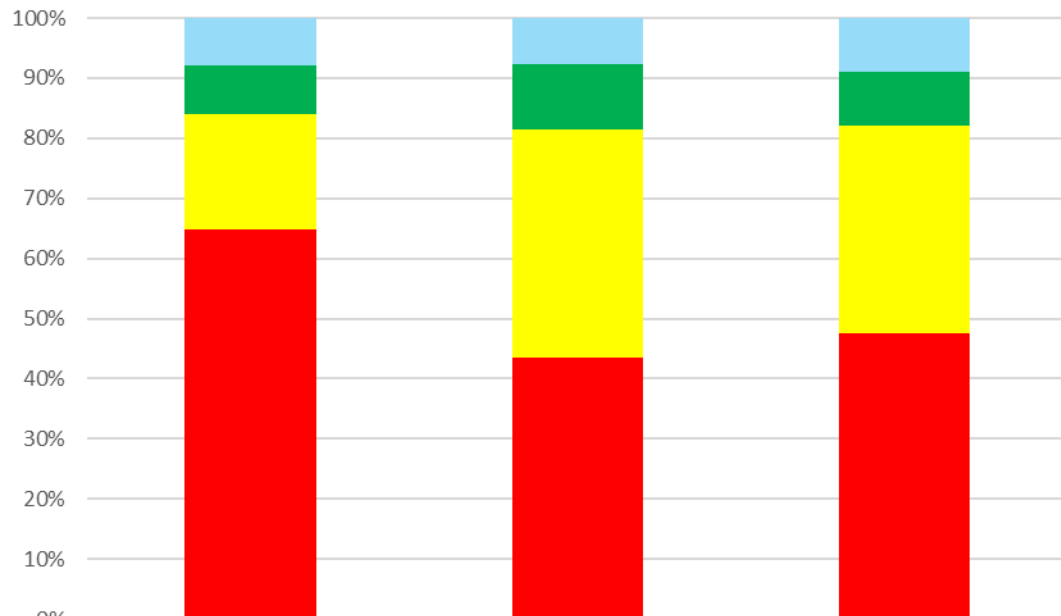
Below Basic
Basic
Proficient
Advanced

ELA				
	Below Basic	Basic	Proficient	Advanced
3 rd	160-330	331-363	364-394	395-560
4 th	170-336	337-387	388-418	419-570
5 th	210-350	351-402	403-430	431-600
6 th	230-370	371-412	413-437	438-620
7 th	240-383	384-434	435-455	456-630
8 th	250-392	393-442	443-475	476-650

Math				
	Below Basic	Basic	Proficient	Advanced
3 rd	185-325	326-361	362-389	390-520
4 th	210-357	358-386	387-412	413-540
5 th	250-376	377-409	410-434	435-570
6 th	260-387	388-416	417-437	438-580
7 th	270-393	394-434	435-461	462-600
8 th	310-419	420-467	468-505	506-660

District GLA Data - 5th Grade Cohort

MAP GLA English Language Arts - 2024 Gr 5 Cohort



	2022 Gr 3 (N=1343)	2023 Gr 4 (N=1325)	2024 Gr 5 (N=1268)
ADVANCED	7.9%	7.7%	9.0%
PROFICIENT	8.1%	10.9%	8.8%
BASIC	19.2%	37.9%	34.7%
BELOW BASIC	64.8%	43.5%	47.5%

BELOW BASIC BASIC PROFICIENT ADVANCED

MAP GLA Mathematics - 2024 Gr 5 Cohort

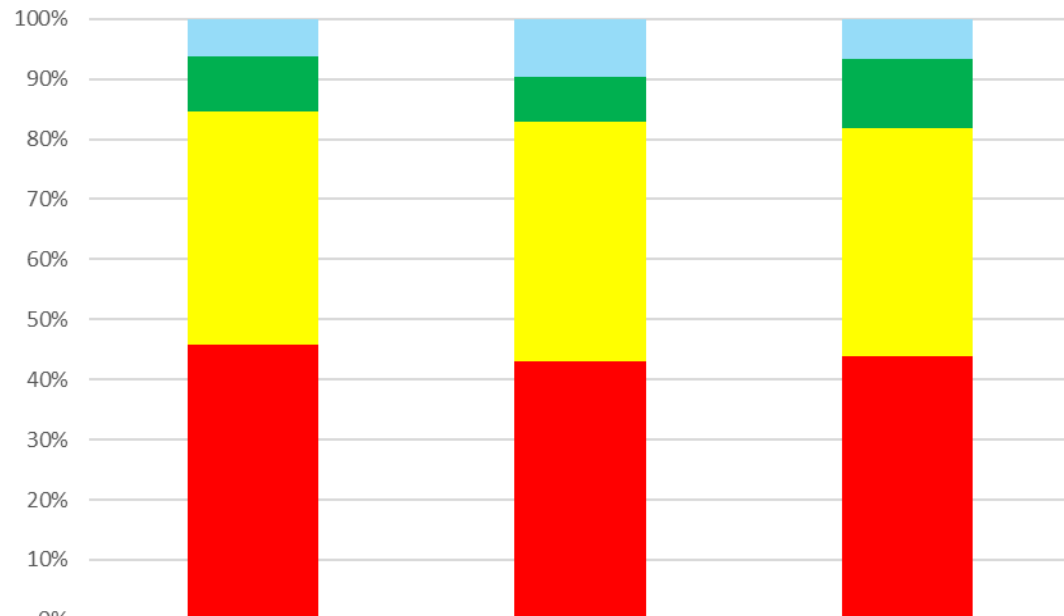


	2022 Gr 3 (N=1378)	2023 Gr 4 (N=1350)	2024 Gr 5 (N=1308)
ADVANCED	5.5%	7.0%	8.3%
PROFICIENT	8.0%	6.6%	9.3%
BASIC	18.7%	15.1%	20.0%
BELOW BASIC	67.8%	71.3%	62.4%

BELOW BASIC BASIC PROFICIENT ADVANCED

District GLA Data - 8th Grade Cohort

MAP GLA English Language Arts - 2024 Gr 8 Cohort



	2022 Gr 6 (N=1166)	2023 Gr 7 (N=1034)	2024 Gr 8 (N=1077)
ADVANCED	6.3%	9.6%	6.7%
PROFICIENT	9.2%	7.4%	11.5%
BASIC	38.9%	39.9%	38.0%
BELOW BASIC	45.7%	43.0%	43.8%

BELOW BASIC BASIC PROFICIENT ADVANCED

MAP GLA Mathematics - 2024 Gr 8 Cohort



	2022 Gr 6 (N=1180)	2023 Gr 7 (N=1046)	2024 Gr 8 (N=1037)
ADVANCED	6.3%	5.1%	3.9%
PROFICIENT	5.5%	5.7%	8.0%
BASIC	19.6%	21.6%	22.8%
BELOW BASIC	68.6%	67.6%	65.4%

BELOW BASIC BASIC PROFICIENT ADVANCED

Missouri Assessment Program (MAP – End-of-Course)

Assessments are given annually to students who receive credit in:

- Algebra I
- English II
- Biology
- Government

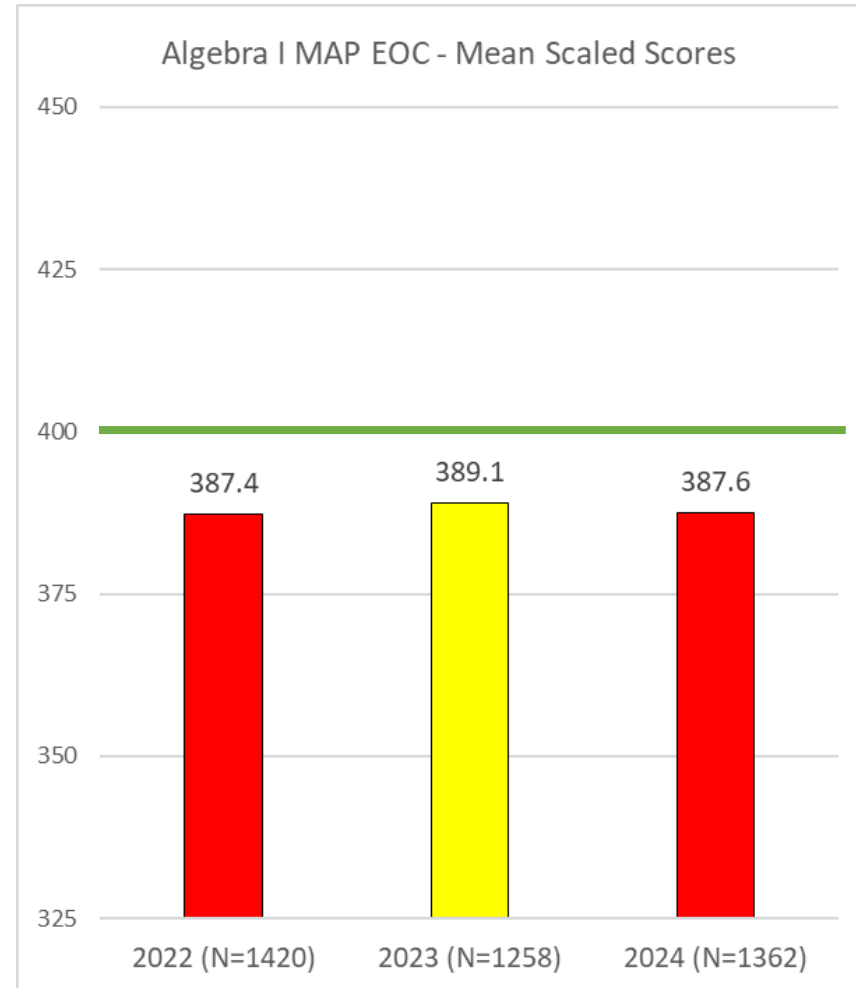
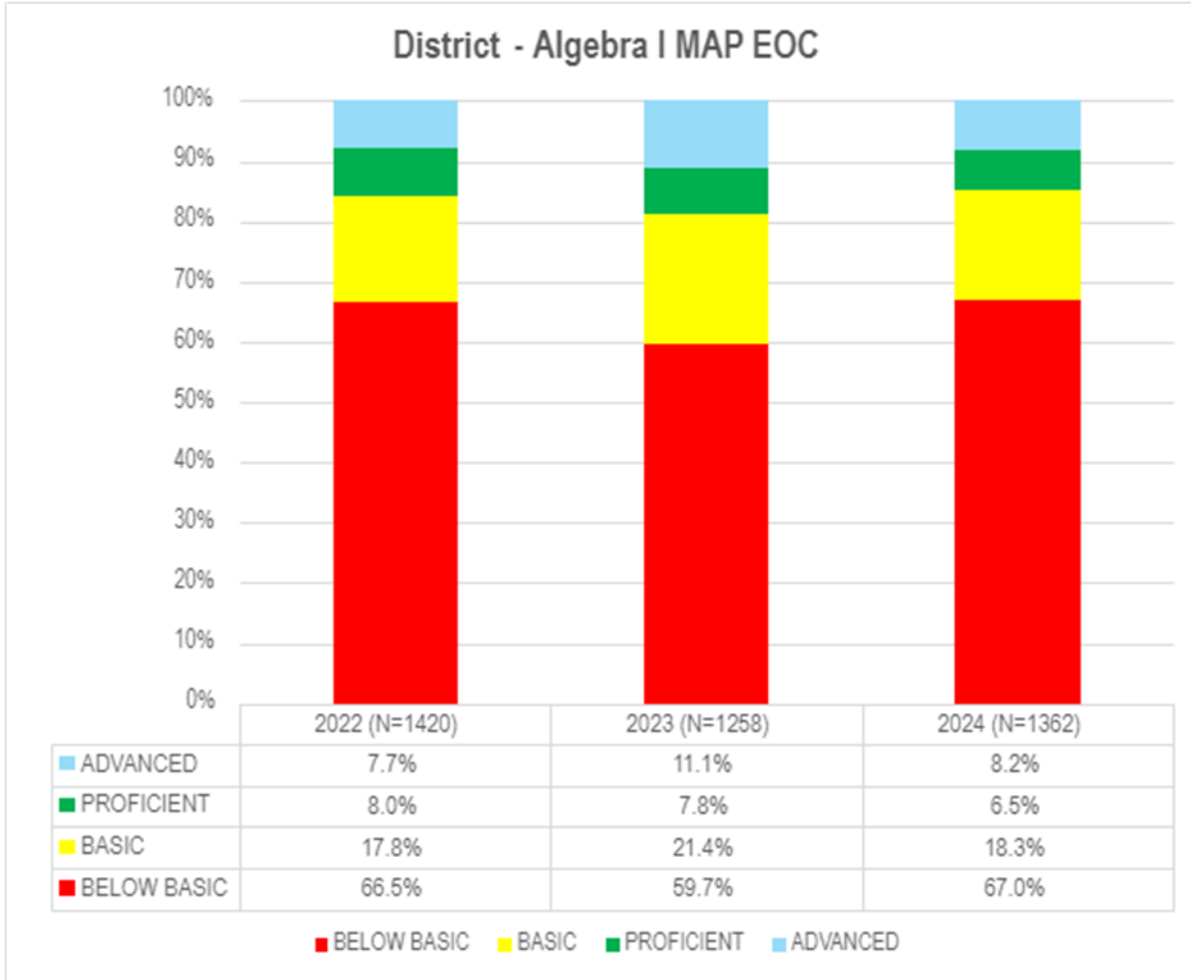


MAP EOC Achievement Levels

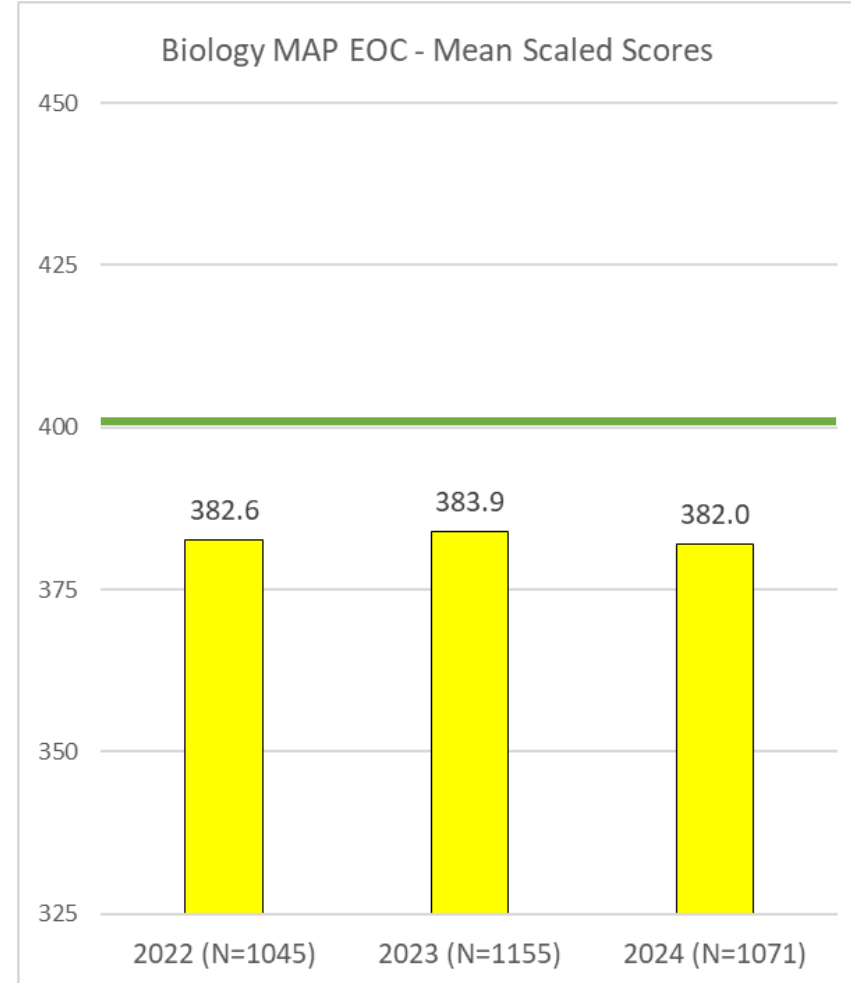
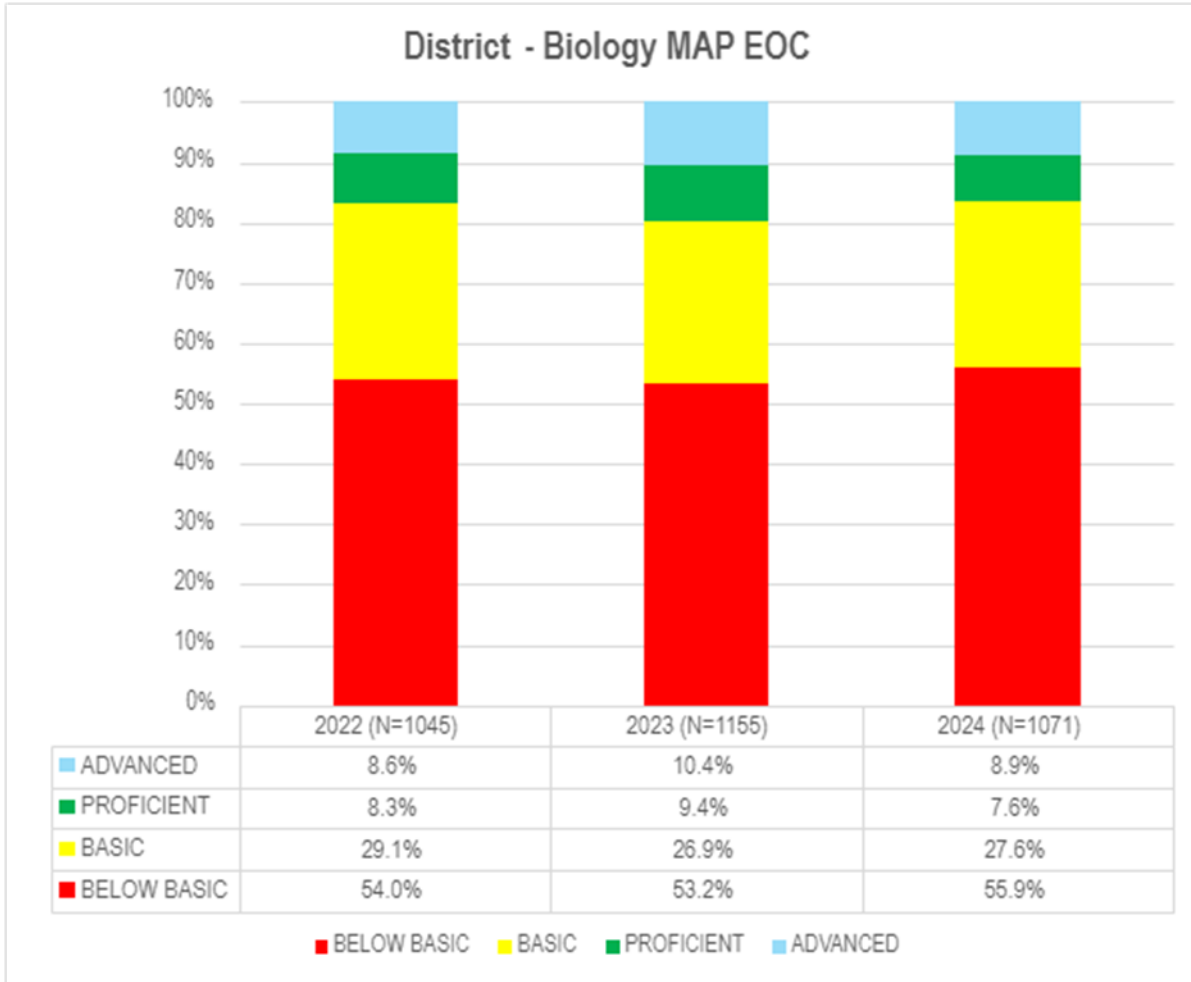
Below Basic
Basic
Proficient
Advanced

Grade Level	Below Basic	Basic	Proficient	Advanced
Algebra I	325-388	389-399	400-408	409+
English II	325-383	384-399	400-419	420+
Biology	325-380	381-399	400-410	411+
Government	325-374	375-399	400-422	423+

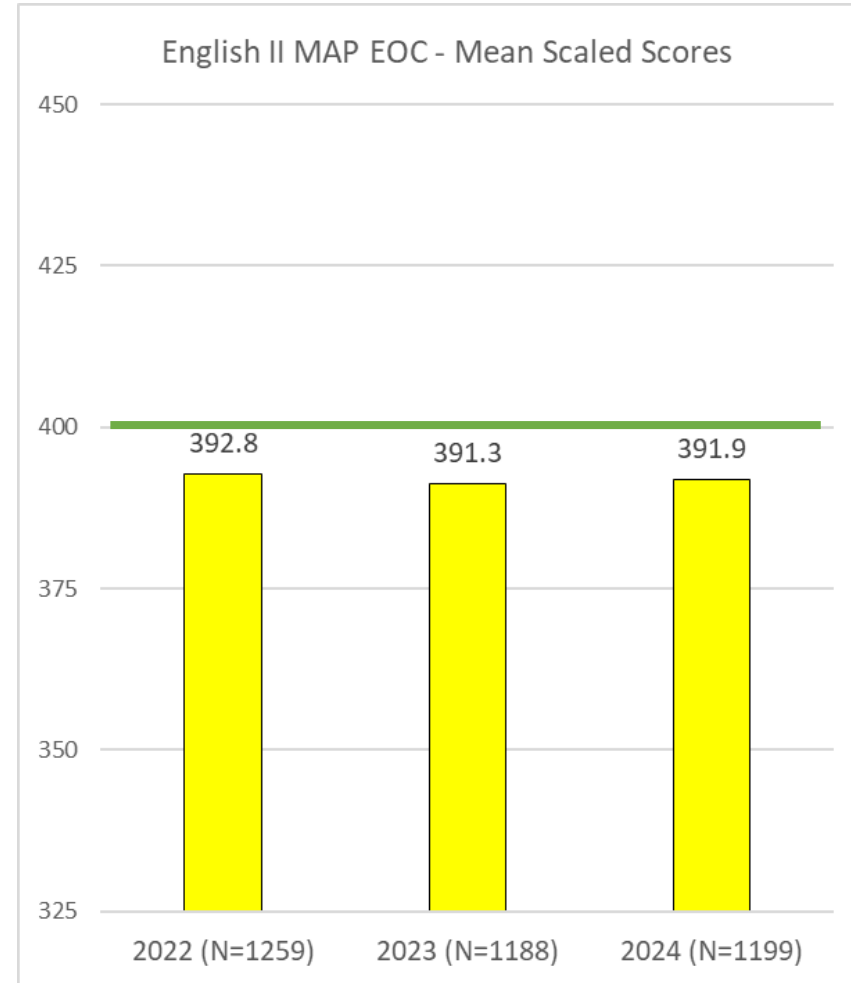
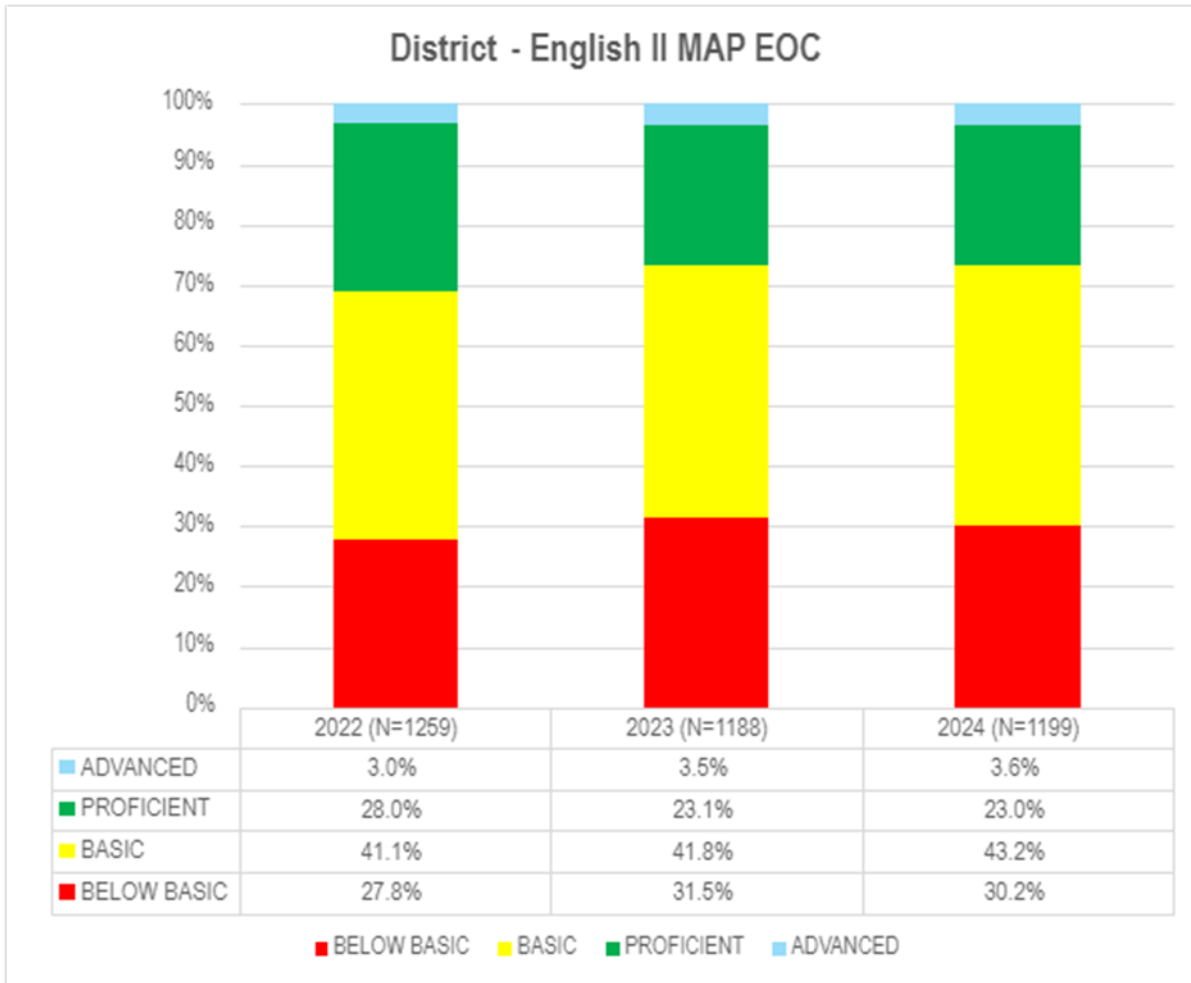
District EOC Data - 3 Year Historical



District EOC Data - 3 Year Historical

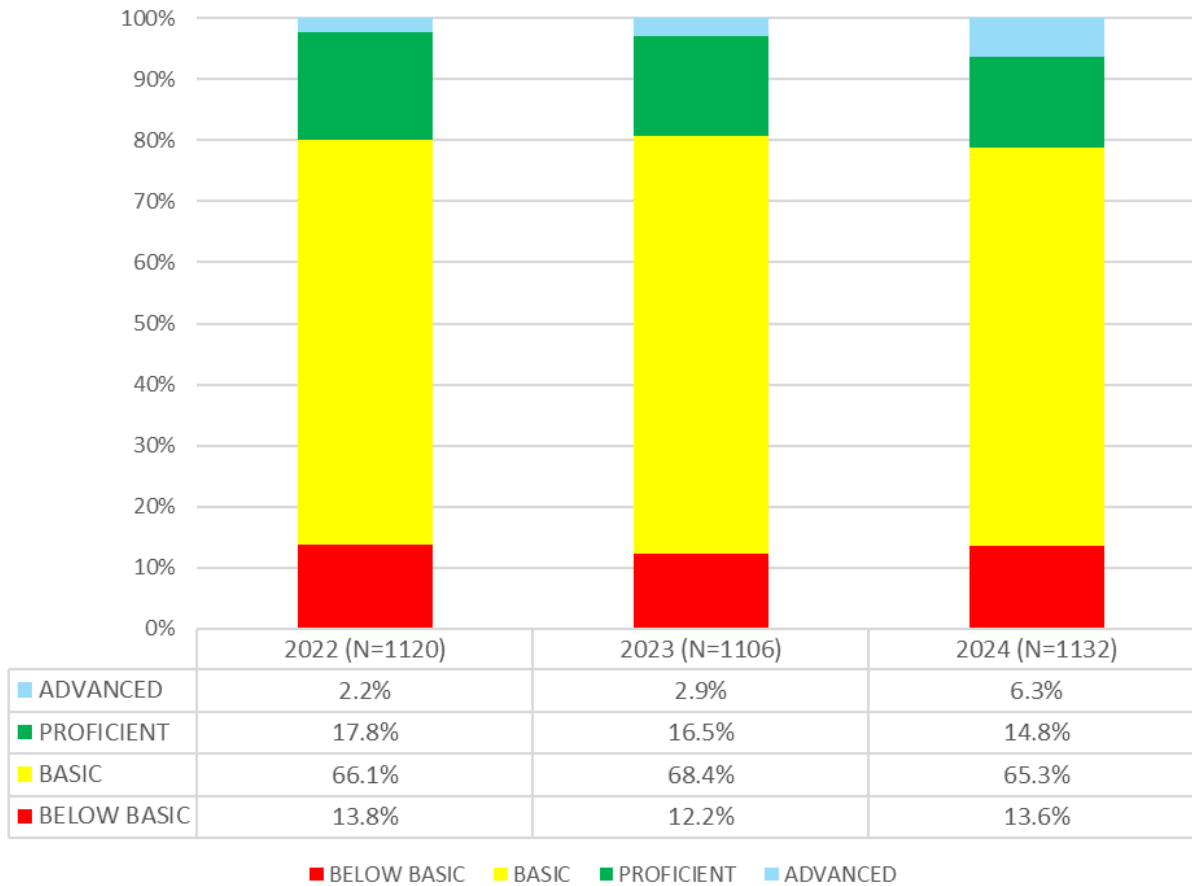


District EOC Data - 3 Year Historical

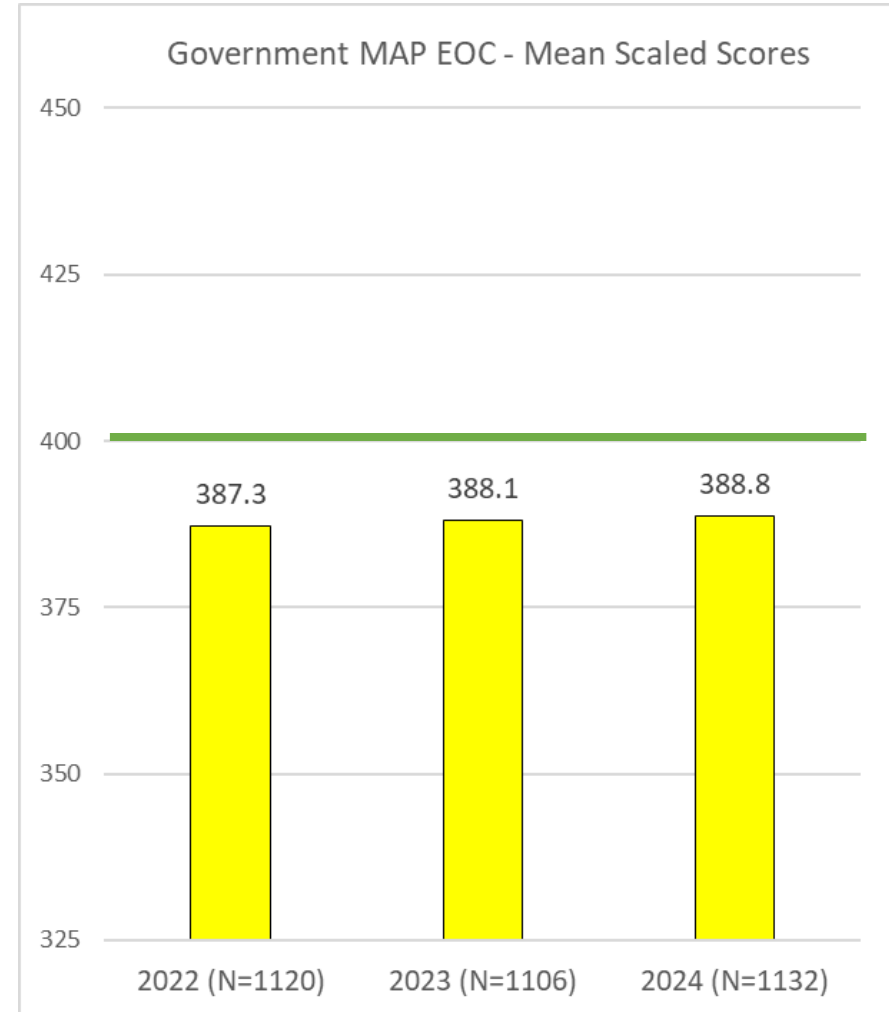


District EOC Data - 3 Year Historical

District - Government MAP EOC



Government MAP EOC - Mean Scaled Scores



Action Steps



- Principals
 - Received data in July
 - Used to revise school accountability plan
- Academic Team
 - Received data in July
 - Used to align scope and sequence
 - Used to target support by grade or content
 - Used to plan PD for deeper learning based on priority standards
- Assessment Stakeholder Collaboration Team
 - Build the data literacy practices across the District



MSIP 6



- Missouri School Improvement Program
 - Focuses on
 - continuous improvement for all schools
 - life beyond high school
 - Promoting practices that lead to healthy school systems
 - Annual Performance Reports (APR)
 - Classification
 - Accredited, Provisional Accreditation, Unaccredited
 - 2023 – 2024 Initial Classification: SLPS is accredited
 - 2024 – 2025 Reclassification based on APR may occur
 - APR Released later this Fall



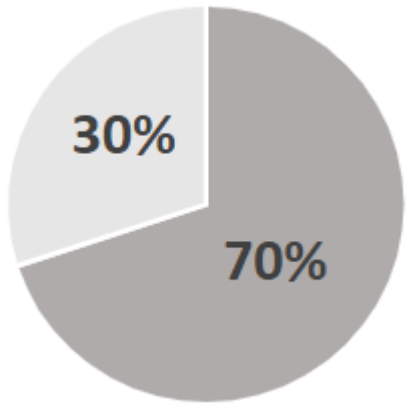
MSIP 6 – APR Points



2023-24 APR Scoring Table for K-12 LEAs

Academic Achievement: Status	ELA	Math	Science	Social Studies	Subtotal
All Students Points Possible	12	12	4	4	32
Student Group Points Possible	6	6	2	2	16
Academic Achievement: Growth	ELA	Math	Science	Social Studies	
All Students Points Possible	12	12	4	4	32
Student Group Points Possible	6	6	2	2	16
Success-Ready (Performance)					
Points Possible			20		20
Graduation Rate					
Points Possible			20		20
Follow-Up					
Points Possible			4		4
Continuous Improvement: Improvement Planning					
Continuous School Improvement Plan (CSIP)	*Scoring breakdowns outlined in the associated standard sections				30
LEA Response to Standards					8
Climate and Culture Survey					4
MSIP 6 Required Documentation					
Points Possible			6		6
Success-Ready (Continuous Improvement)	School Readiness	Attendance	ICAP		
Points Possible	4	4	4		12

■ Performance
140 points possible



■ Continuous Improvement
60 points possible



Table 4



Additional MAP GLA Data



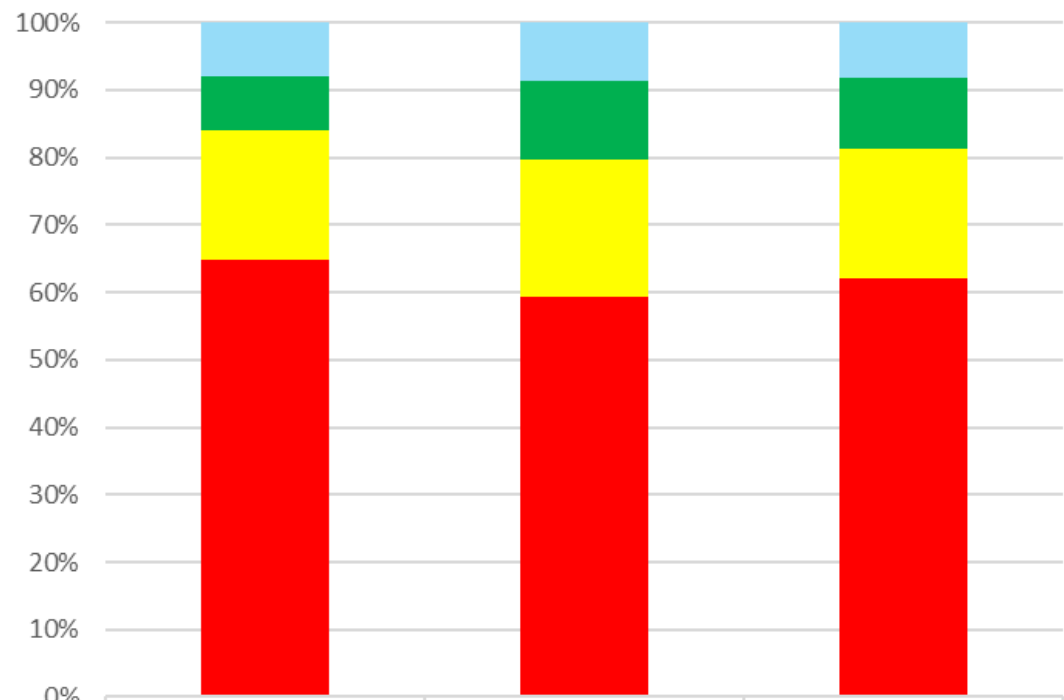
The following slides contain 3 year historical MAP Grade-Level data by grade and content.



District MAP GLA ELA Data - 3 Year Historical

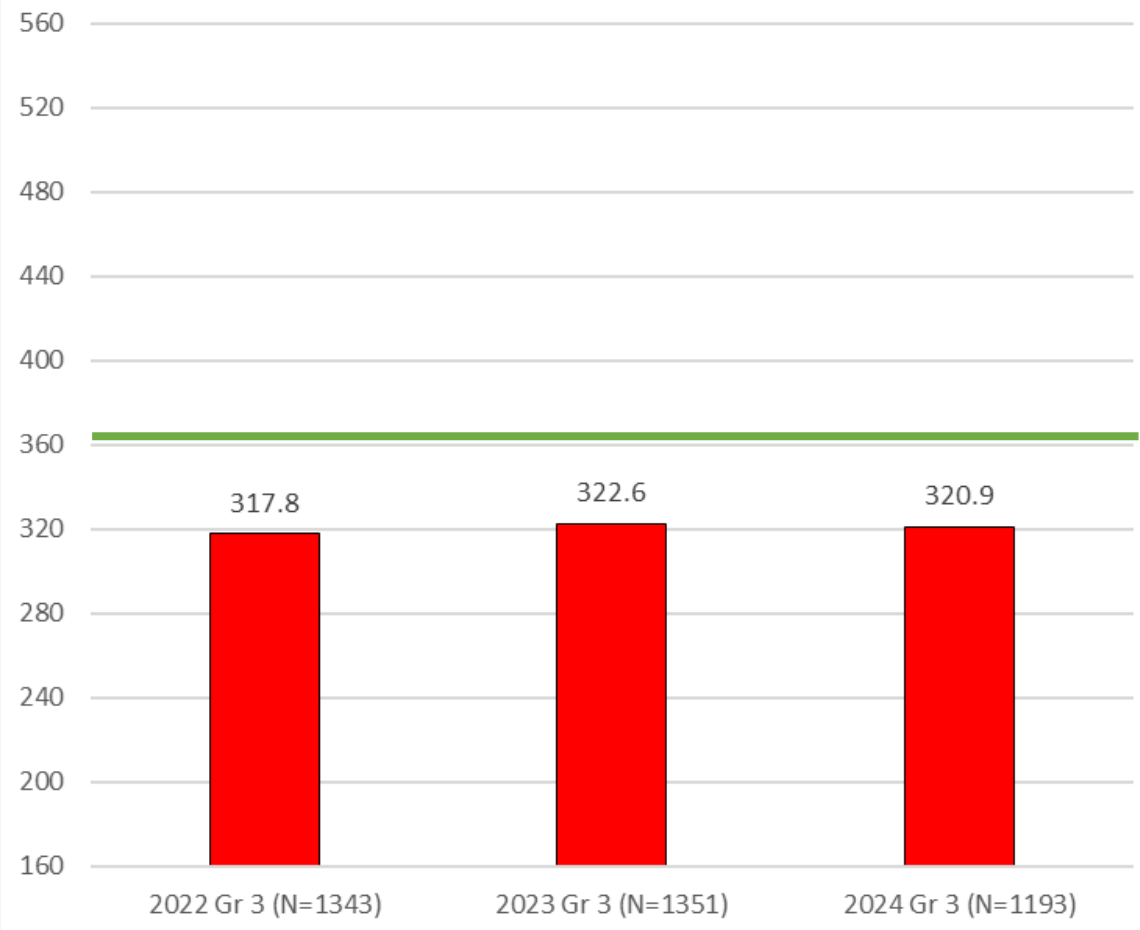


3rd Grade MAP GLA ELA - 3 Yr Performance Levels



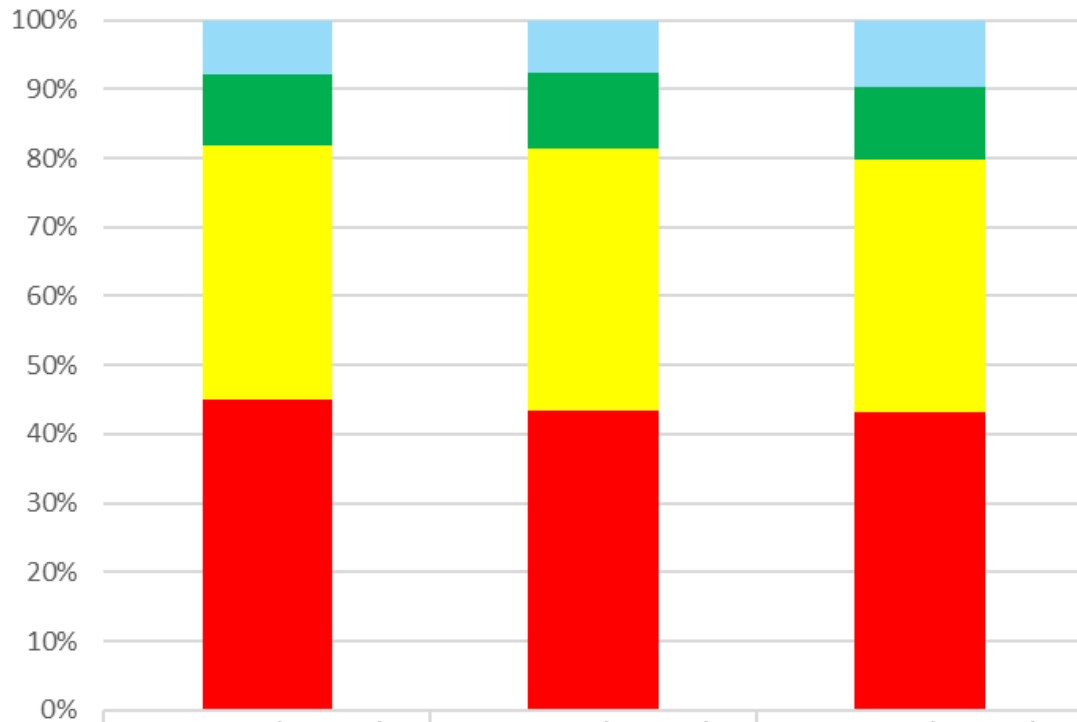
	2022 Gr 3 (N=1343)	2023 Gr 3 (N=1351)	2024 Gr 3 (N=1193)
Advanced	7.89%	8.66%	8.13%
Proficient	8.12%	11.70%	10.48%
Basic	19.21%	20.36%	19.36%
Below Basic	64.78%	59.29%	62.03%

3rd Grade MAP ELA - 3 Year Mean Scaled Scores



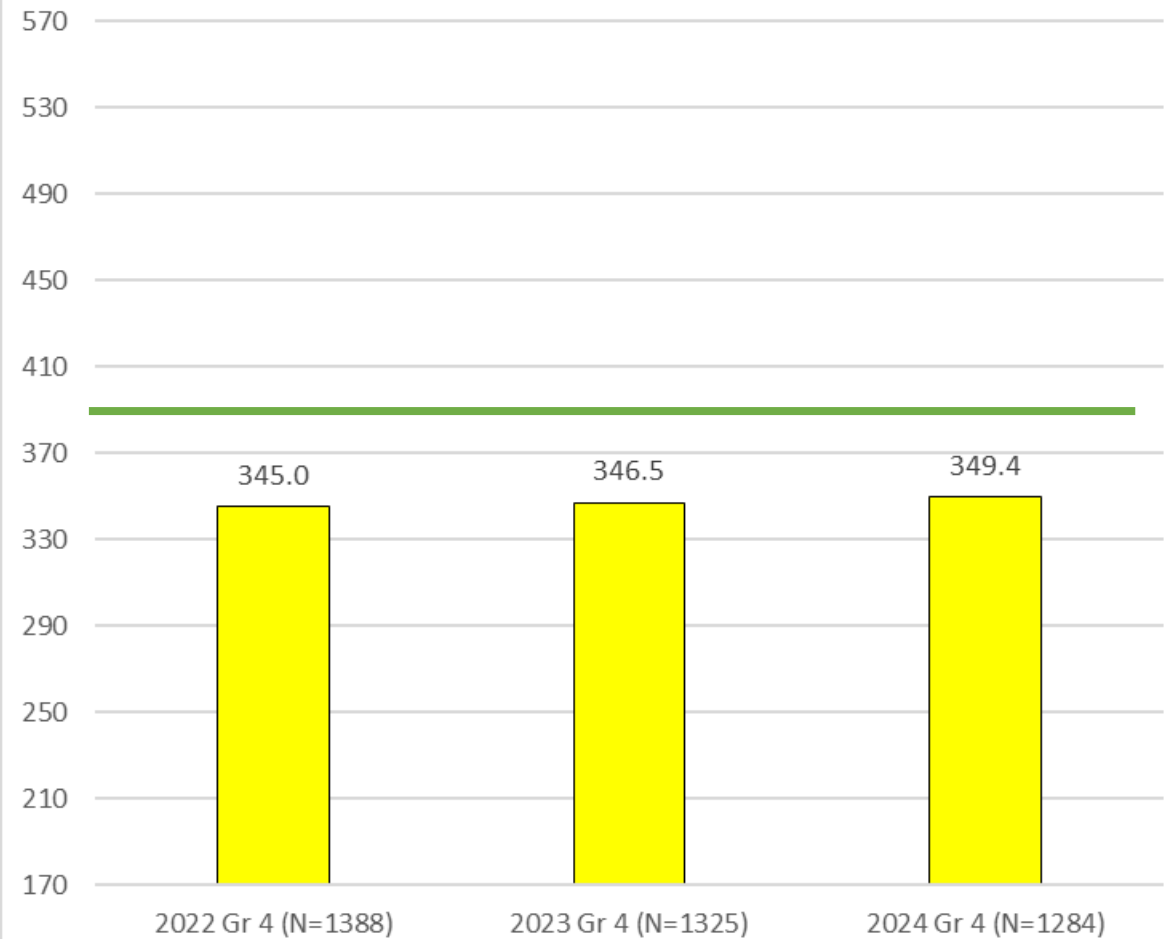
District MAP GLA ELA Data - 3 Year Historical

4th Grade MAP ELA - 3 Year Performance Levels



Advanced	8.00%	7.70%	9.74%
Proficient	10.09%	10.94%	10.51%
Basic	36.96%	37.89%	36.68%
Below Basic	44.96%	43.47%	43.07%

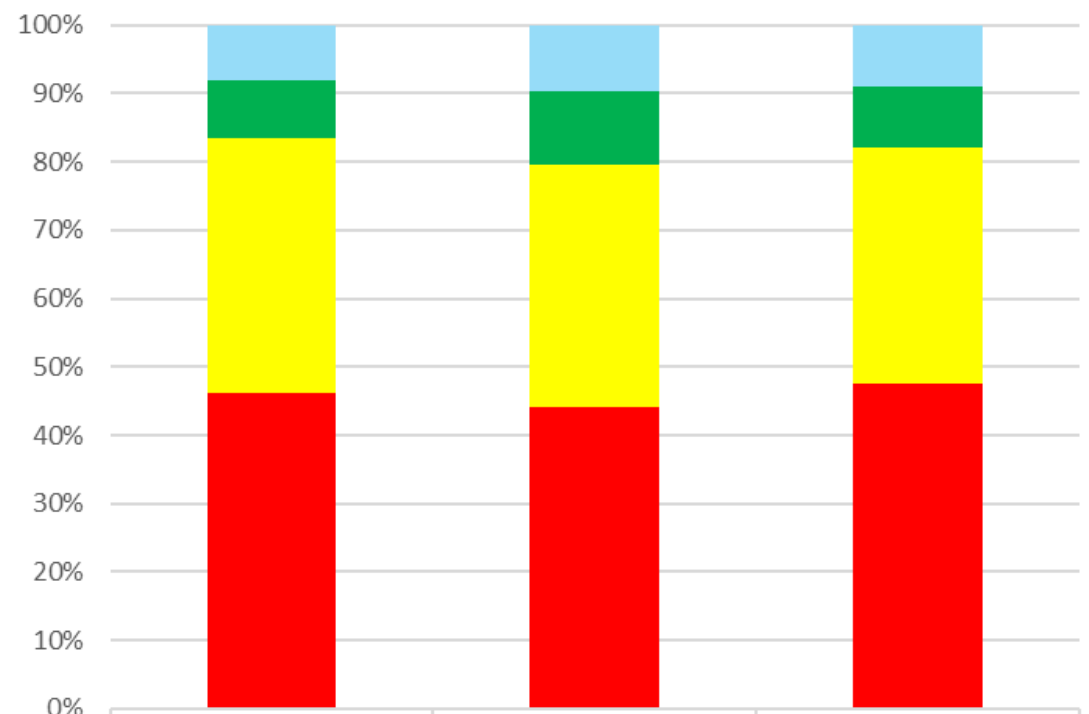
4th Grade MAP ELA - 3 Year Mean Scaled Scores



District MAP GLA ELA Data - 3 Year Historical

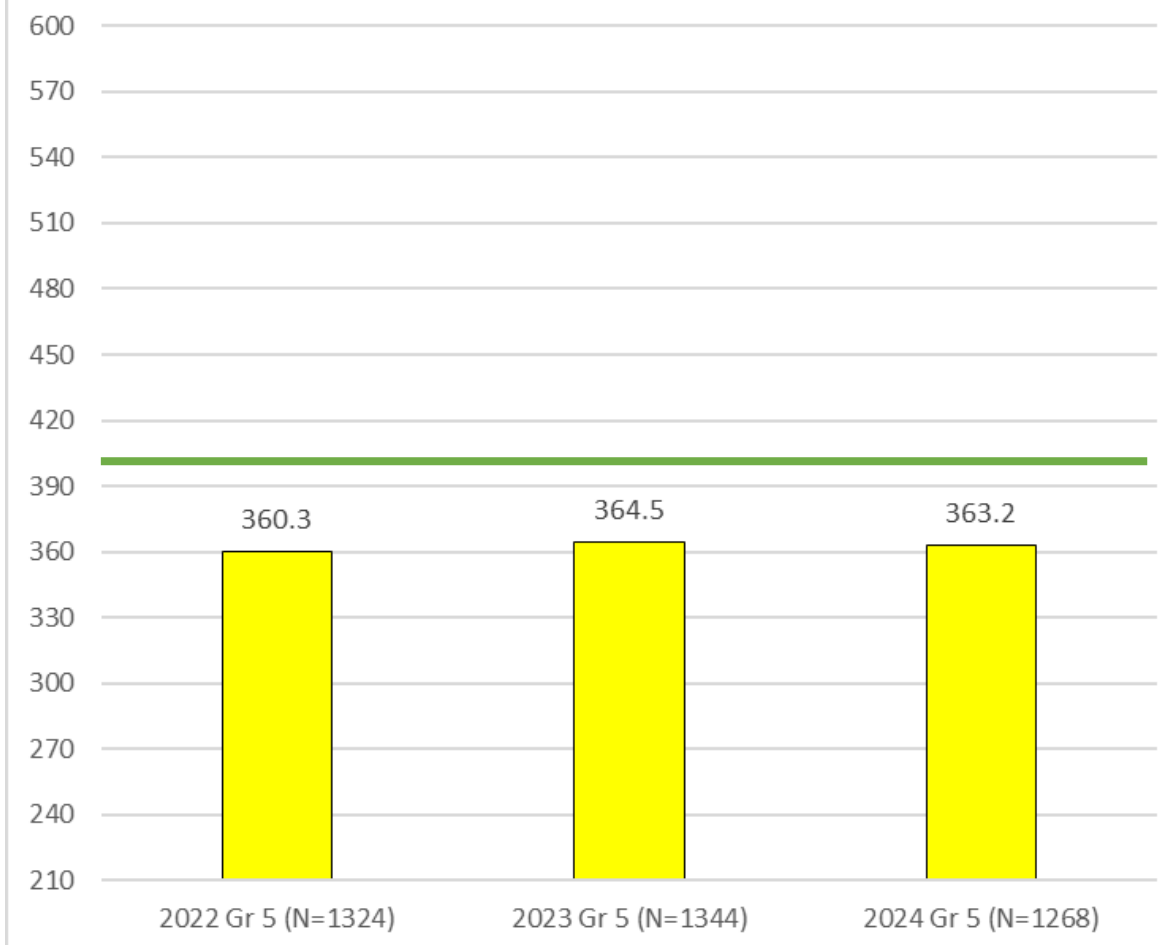


5th Grade MAP ELA - 3 Year Performance Levels



	2022 Gr 5 (N=1324)	2023 Gr 5 (N=1344)	2024 Gr 5 (N=1268)
Advanced	8.16%	9.67%	8.99%
Proficient	8.31%	10.79%	8.83%
Basic	37.39%	35.34%	34.70%
Below Basic	46.15%	44.20%	47.48%

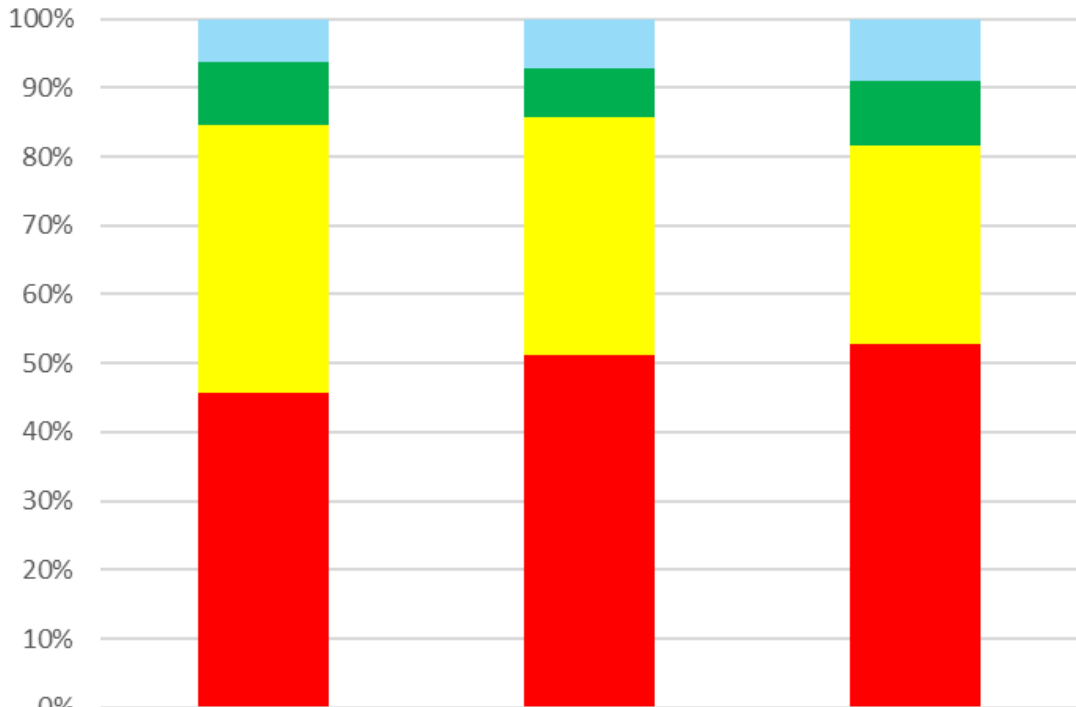
5th Grade MAP ELA - 3 Year Mean Scaled Scores



District MAP GLA ELA Data - 3 Year Historical

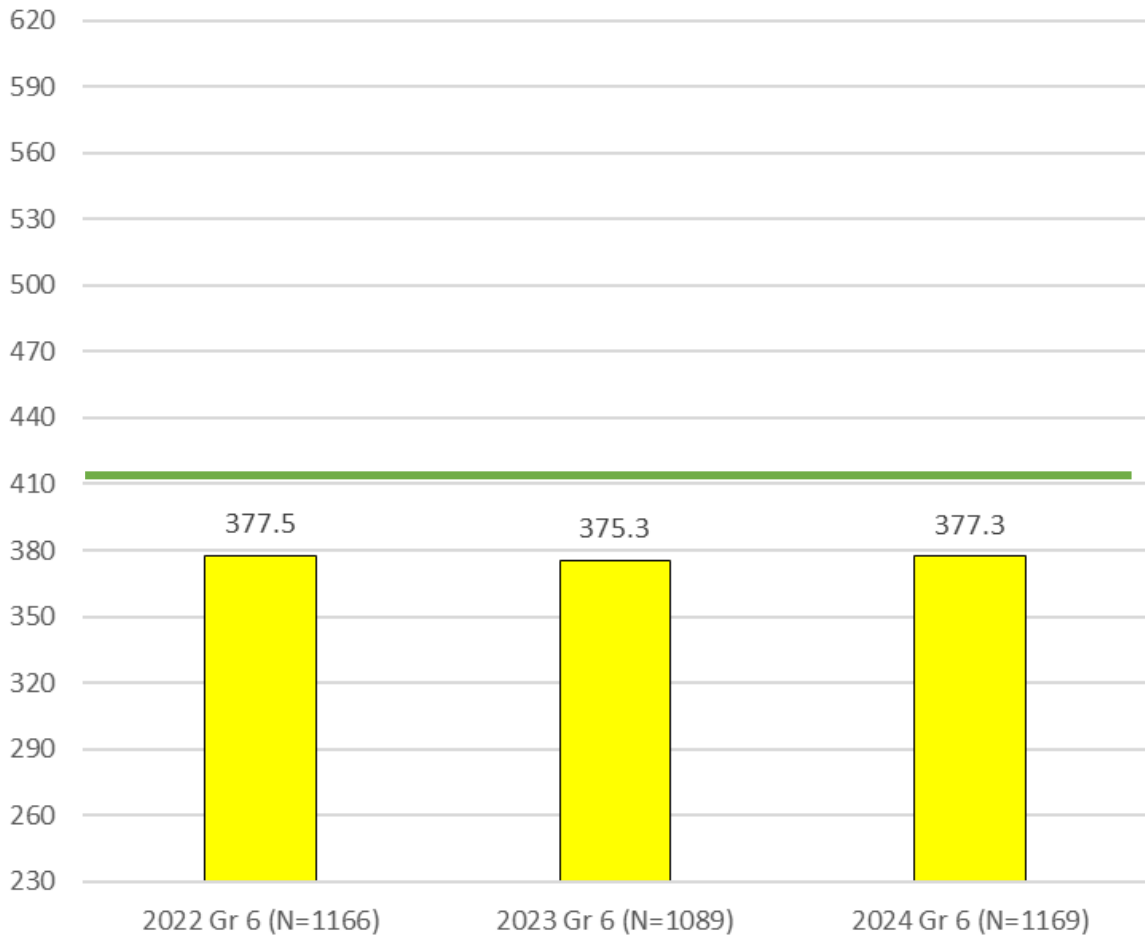


6th Grade MAP ELA - 3 Year Performance Levels



	2022 Gr 6 (N=1166)	2023 Gr 6 (N=1089)	2024 Gr 6 (N=1169)
Advanced	6.26%	7.16%	9.07%
Proficient	9.18%	7.07%	9.24%
Basic	38.85%	34.53%	28.91%
Below Basic	45.71%	51.24%	52.78%

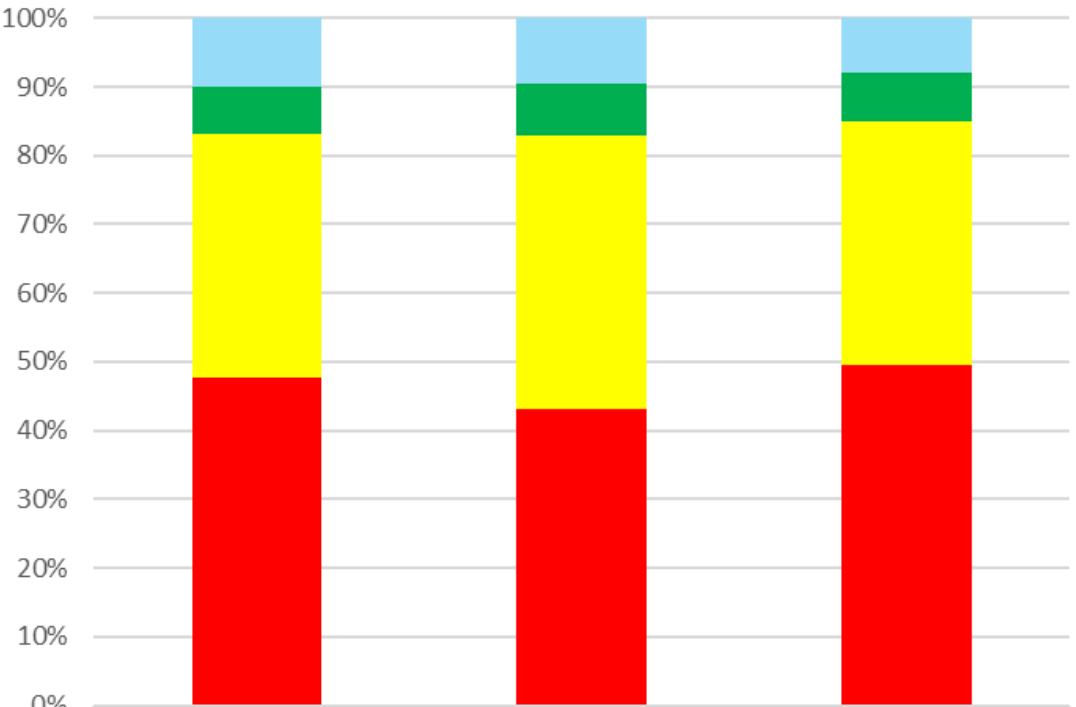
6th Grade MAP ELA - 3 Year Mean Scaled Scores



District MAP GLA ELA Data - 3 Year Historical

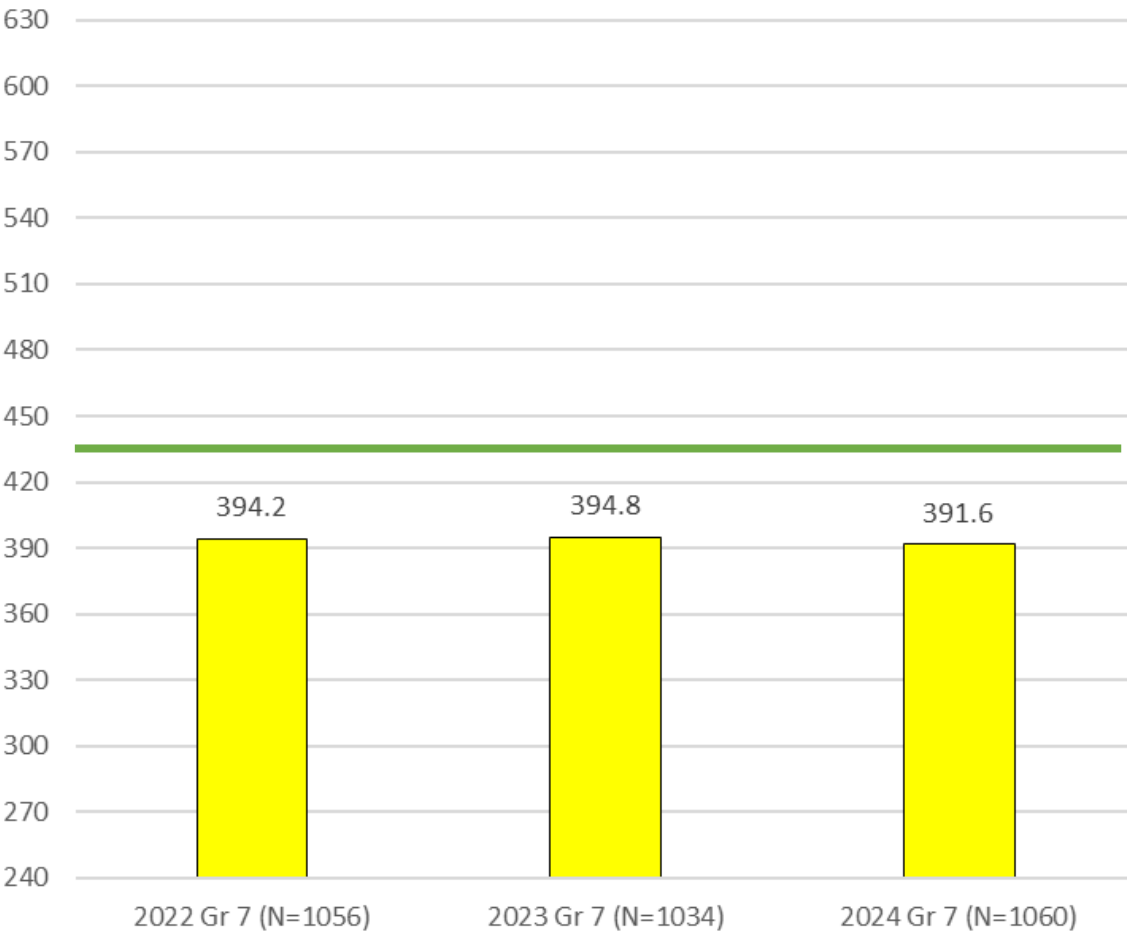


7th Grade MAP ELA - 3 Year Performance Levels



	2022 Gr 7 (N=1056)	2023 Gr 7 (N=1034)	2024 Gr 7 (N=1060)
Advanced	10.04%	9.57%	7.92%
Proficient	6.82%	7.45%	7.08%
Basic	35.51%	39.94%	35.57%
Below Basic	47.63%	43.04%	49.43%

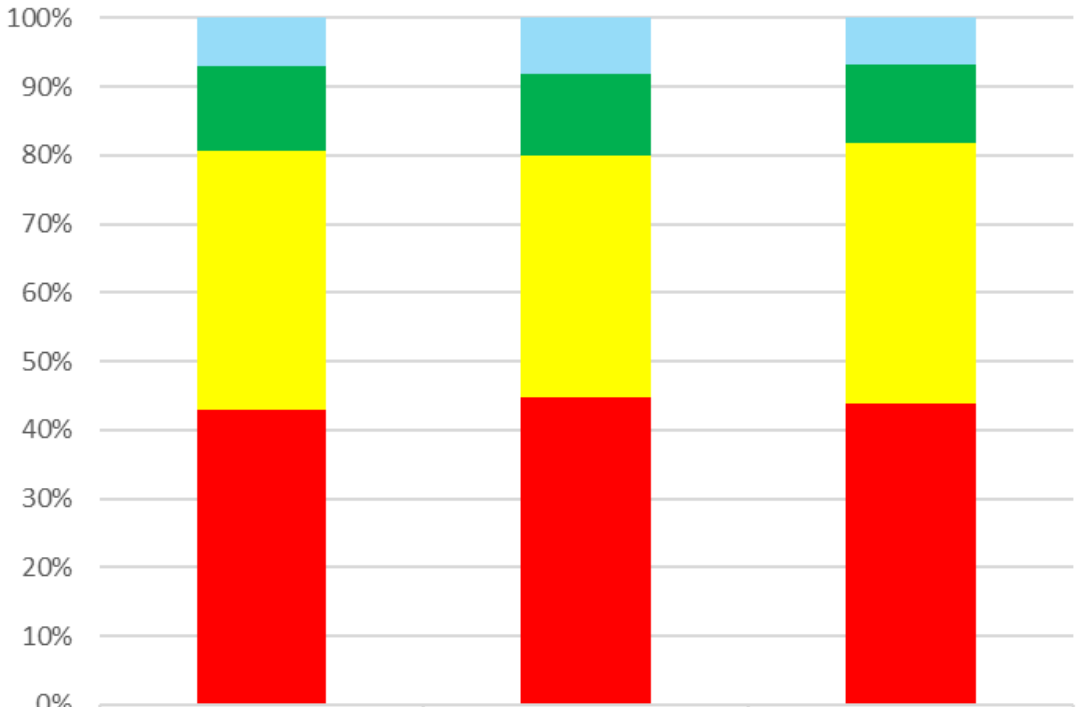
7th Grade MAP ELA - 3 Year Mean Scaled Scores



District MAP GLA ELA Data - 3 Year Historical

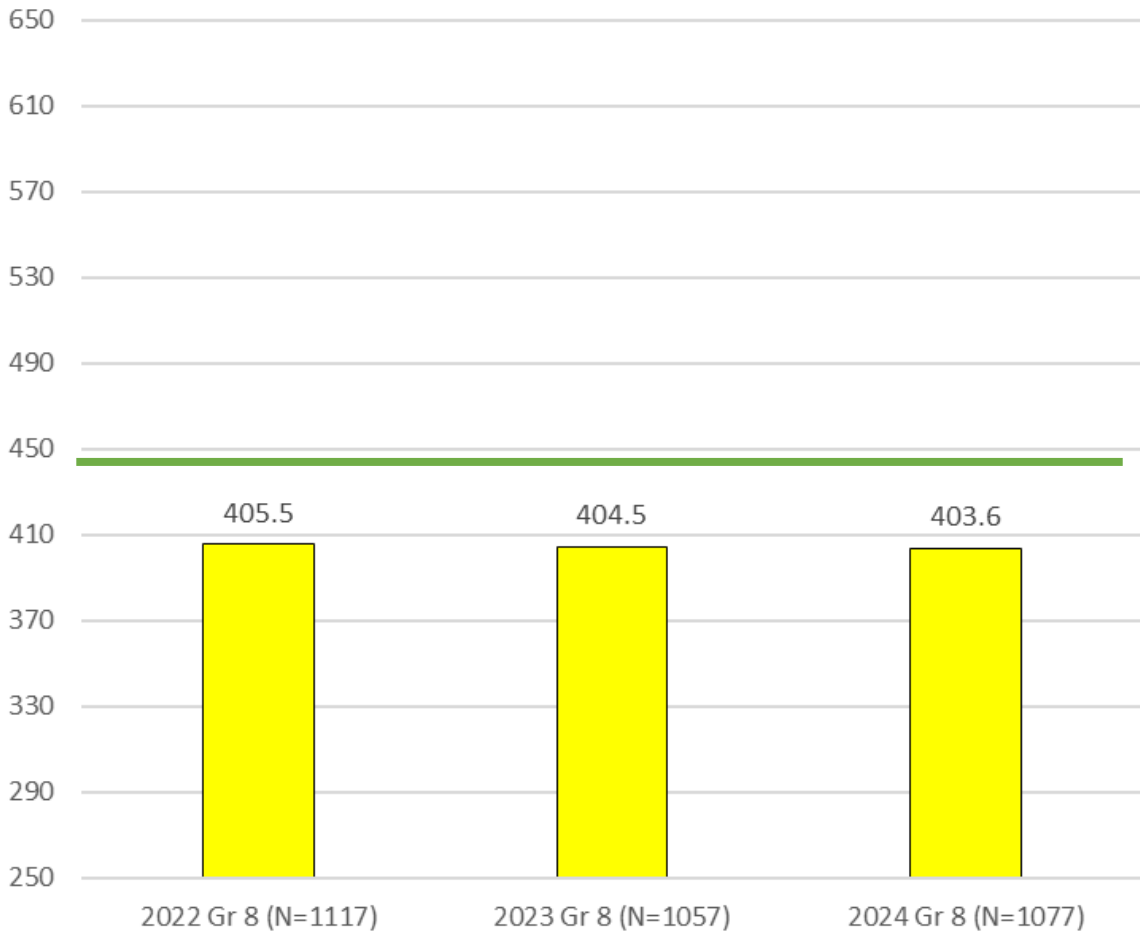


8th Grade MAP ELA - 3 Year Performance Levels



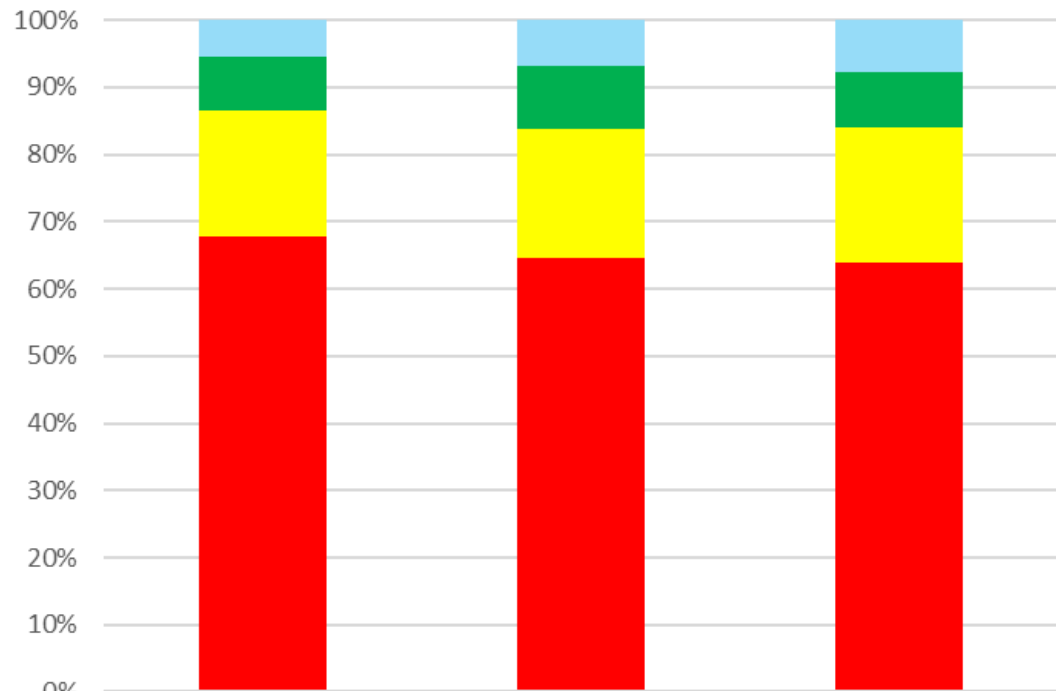
	2022 Gr 8 (N=1117)	2023 Gr 8 (N=1057)	2024 Gr 8 (N=1077)
Advanced	6.89%	8.23%	6.69%
Proficient	12.53%	11.73%	11.51%
Basic	37.60%	35.38%	37.98%
Below Basic	42.97%	44.65%	43.83%

8th Grade MAP ELA - 3 Year Mean Scaled Scores



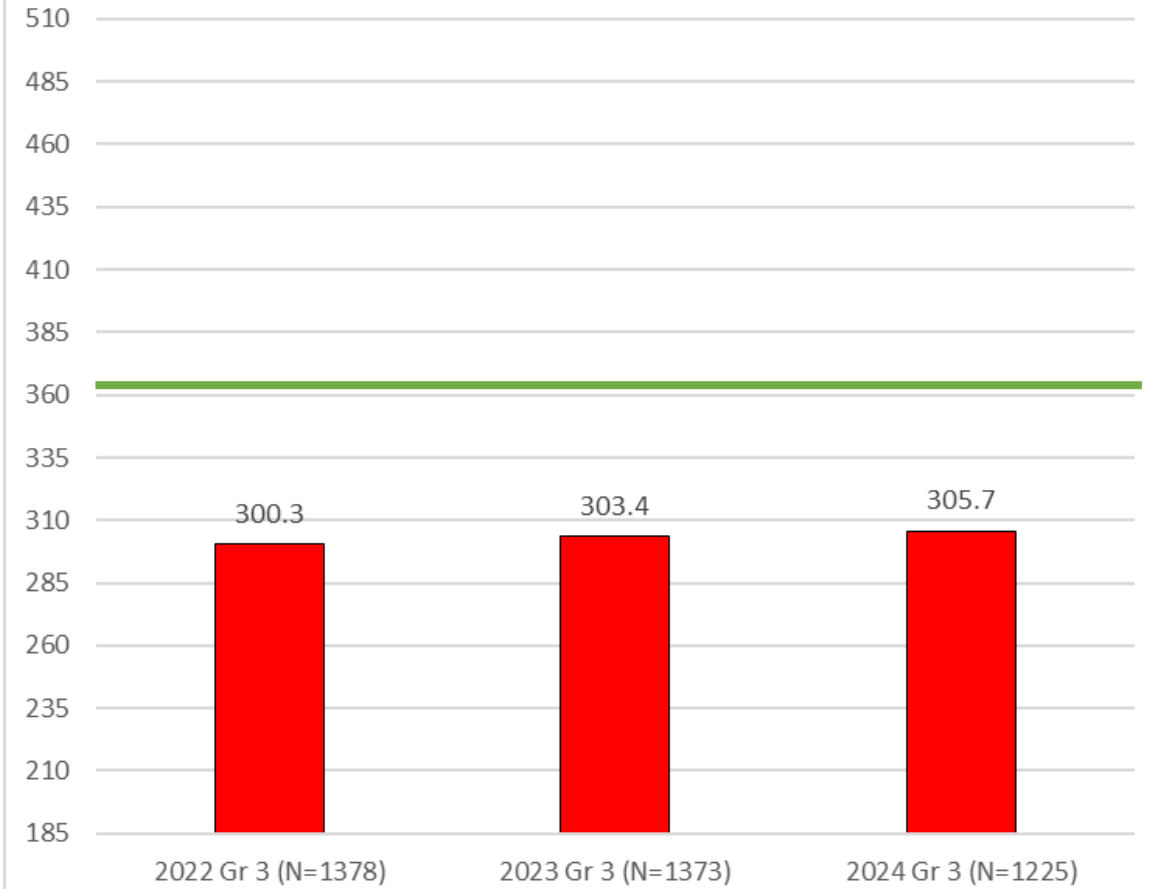
District MAP GLA Math Data - 3 Year Historical

3rd Grade MAP Math - 3 Yr Performance Levels



	2022 Gr 3 (N=1378)	2023 Gr 3 (N=1373)	2024 Gr 3 (N=1225)
Advanced	5.52%	6.92%	7.67%
Proficient	7.98%	9.18%	8.33%
Basic	18.72%	19.23%	20.08%
Below Basic	67.78%	64.68%	63.92%

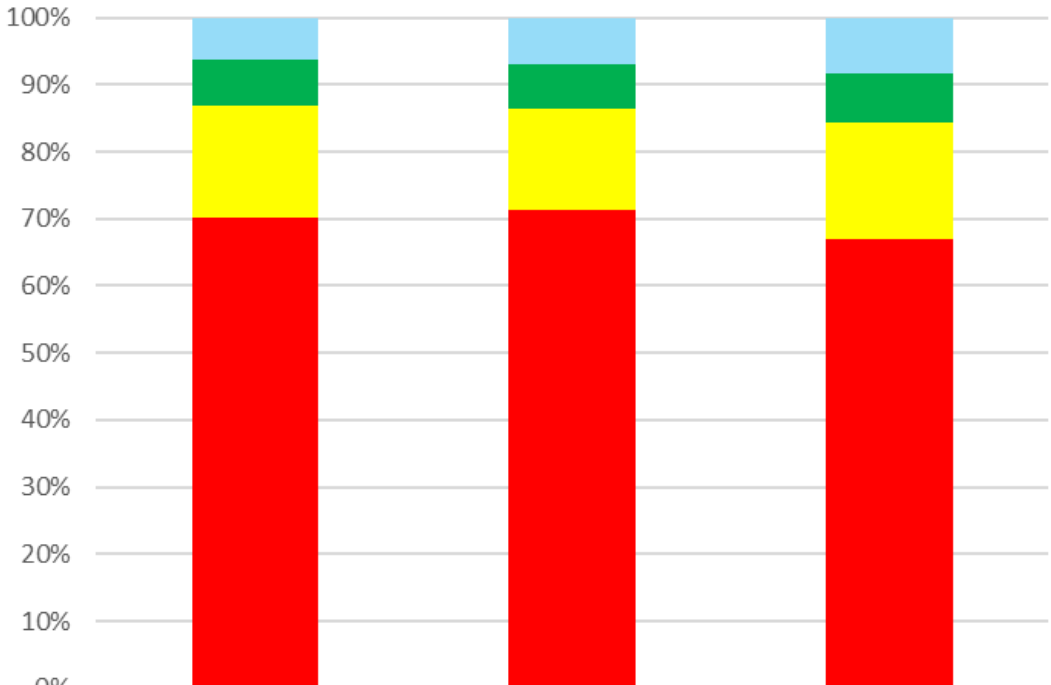
3rd Grade MAP Math - 3 Year Mean Scaled Scores



District MAP GLA Math Data - 3 Year Historical

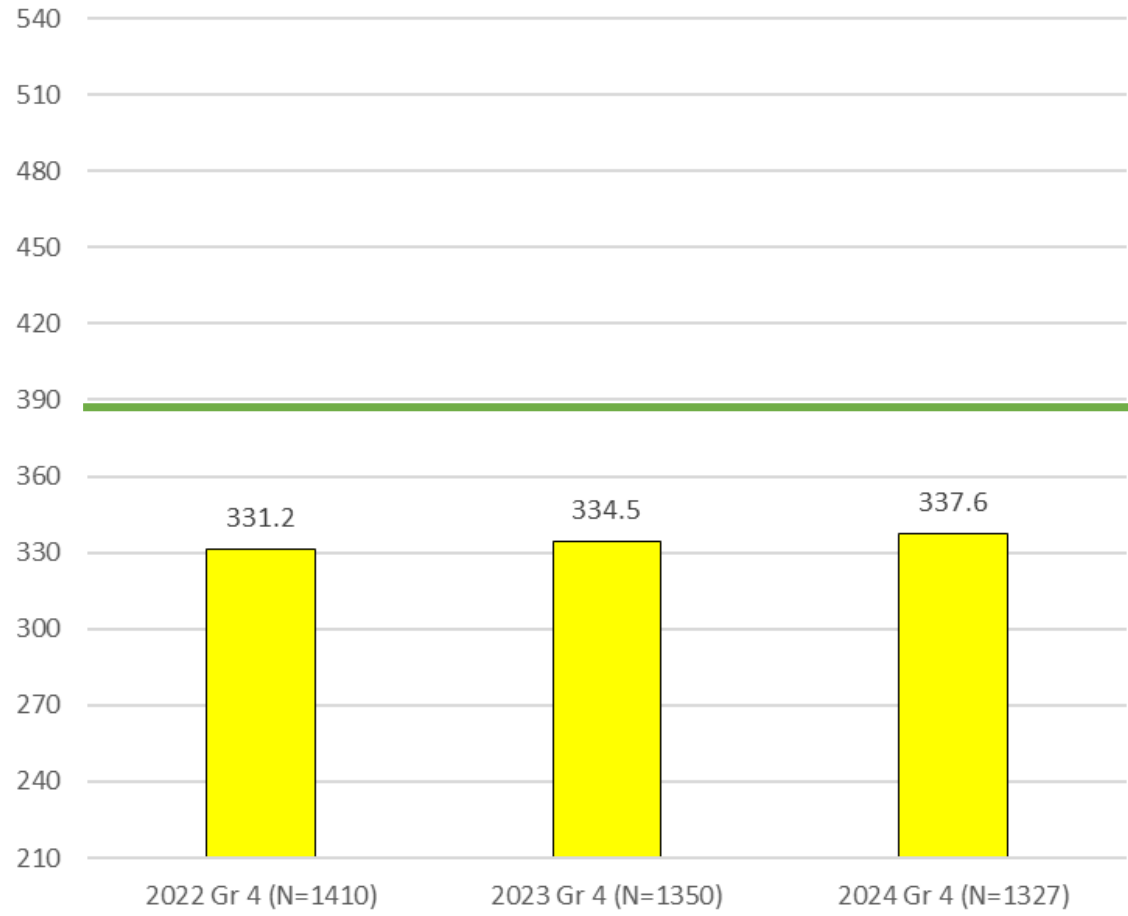


4th Grade MAP Math - 3 Year Performance Levels



	2022 Gr 4 (N=1410)	2023 Gr 4 (N=1350)	2024 Gr 4 (N=1327)
Advanced	6.38%	6.96%	8.29%
Proficient	6.67%	6.59%	7.39%
Basic	16.74%	15.11%	17.41%
Below Basic	70.21%	71.33%	66.92%

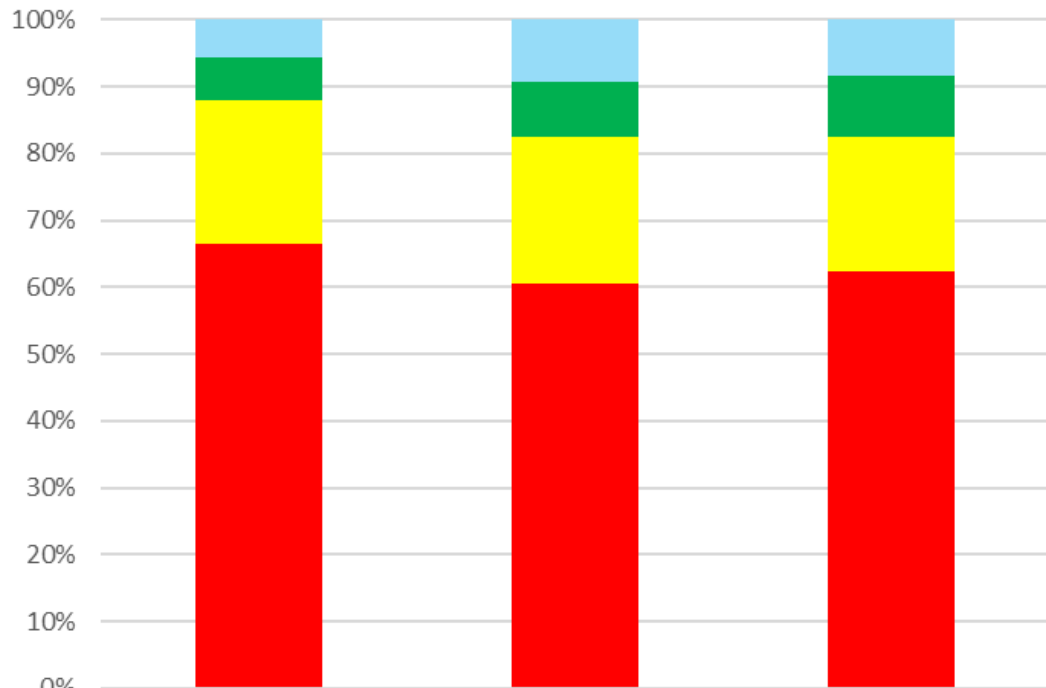
4th Grade MAP Math - 3 Year Mean Scaled Scores



District MAP GLA Math Data - 3 Year Historical



5th Grade MAP Math - 3 Yr Performance Levels



	2022 Gr 5 (N=1344)	2023 Gr 5 (N=1374)	2024 Gr 5 (N=1308)
Advanced	5.58%	9.32%	8.26%
Proficient	6.40%	8.08%	9.33%
Basic	21.50%	22.13%	20.03%
Below Basic	66.52%	60.48%	62.39%

5th Grade MAP Math - 3 Year Mean Scaled Scores

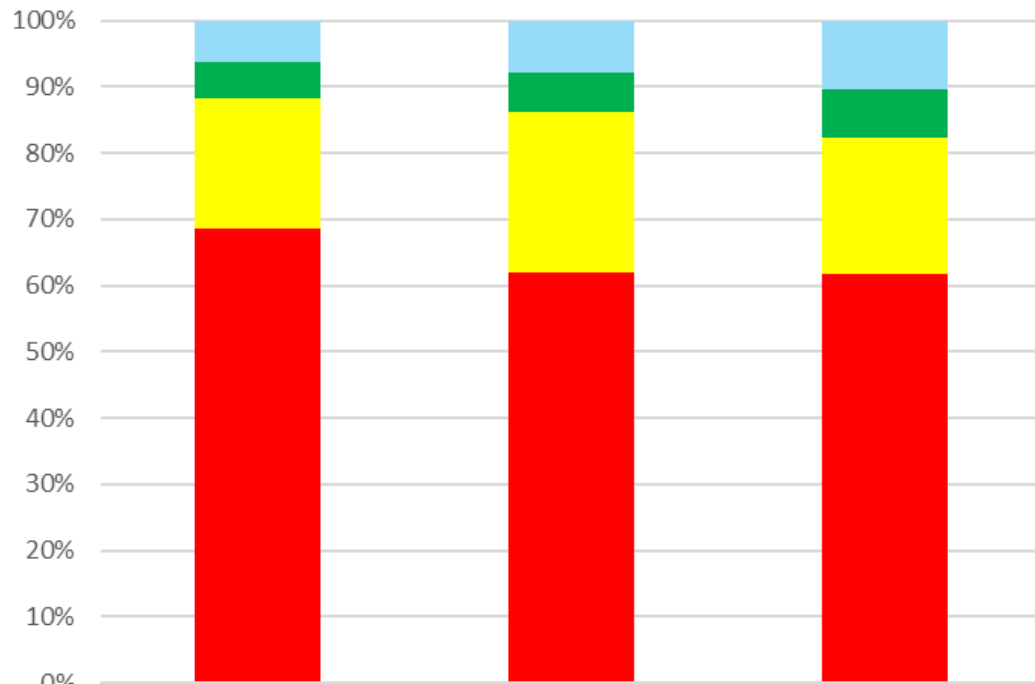


2022 Gr 5 (N=1344) 2023 Gr 5 (N=1374) 2024 Gr 5 (N=1308)

District MAP GLA Math Data - 3 Year Historical

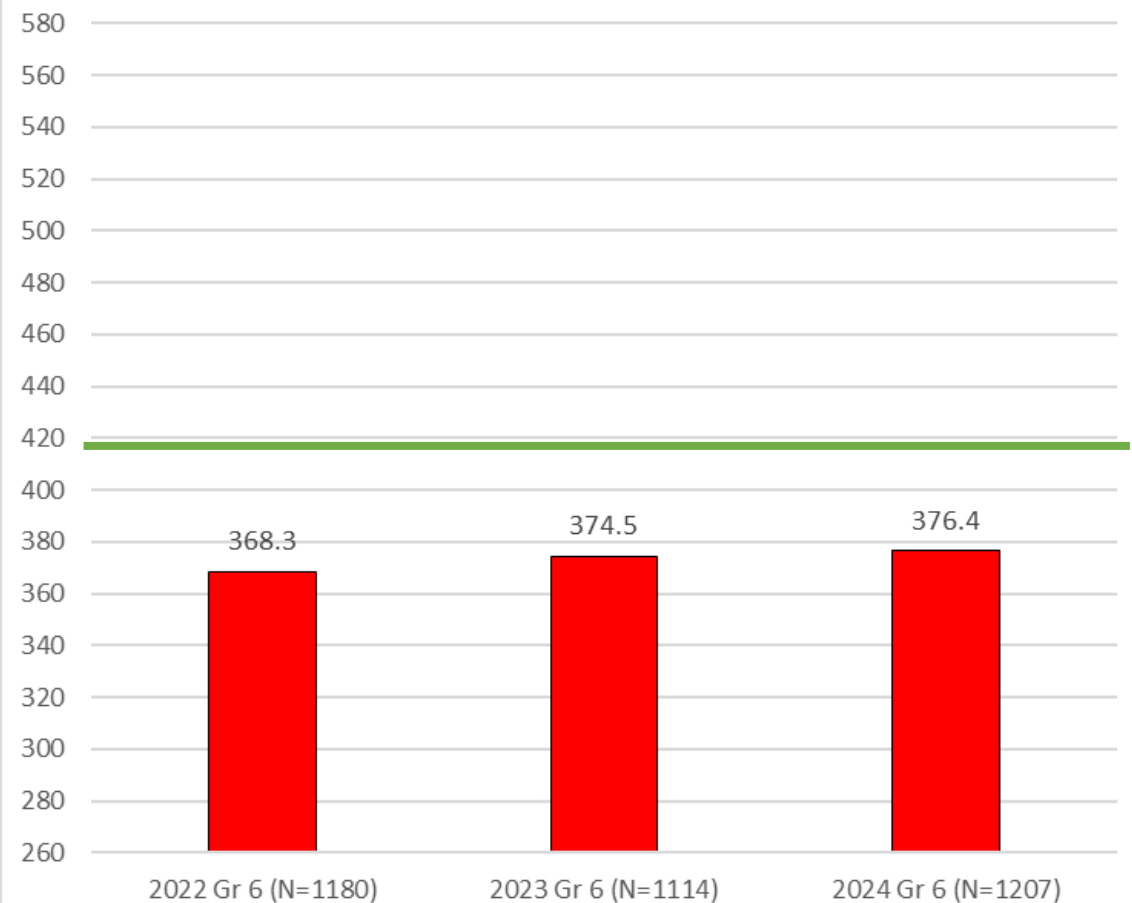


6th Grade MAP Math - 3 Yr Performance Levels



	2022 Gr 6 (N=1180)	2023 Gr 6 (N=1114)	2024 Gr 6 (N=1207)
Advanced	6.27%	7.90%	10.27%
Proficient	5.51%	5.92%	7.46%
Basic	19.58%	24.24%	20.46%
Below Basic	68.64%	61.94%	61.81%

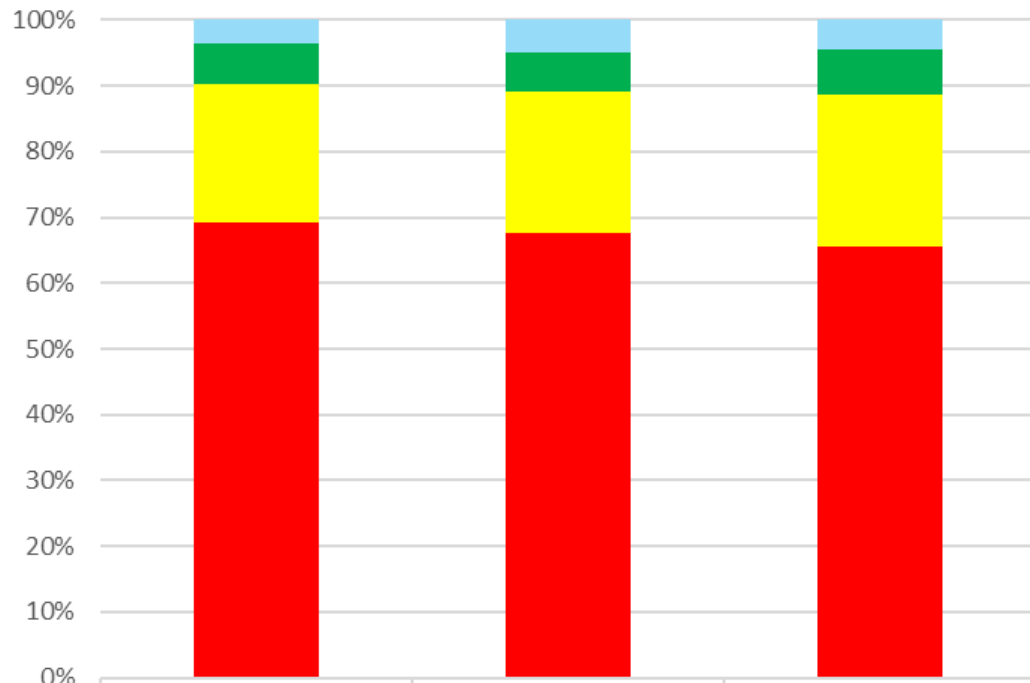
6th Grade MAP Math - 3 Year Mean Scaled Scores



District MAP GLA Math Data - 3 Year Historical

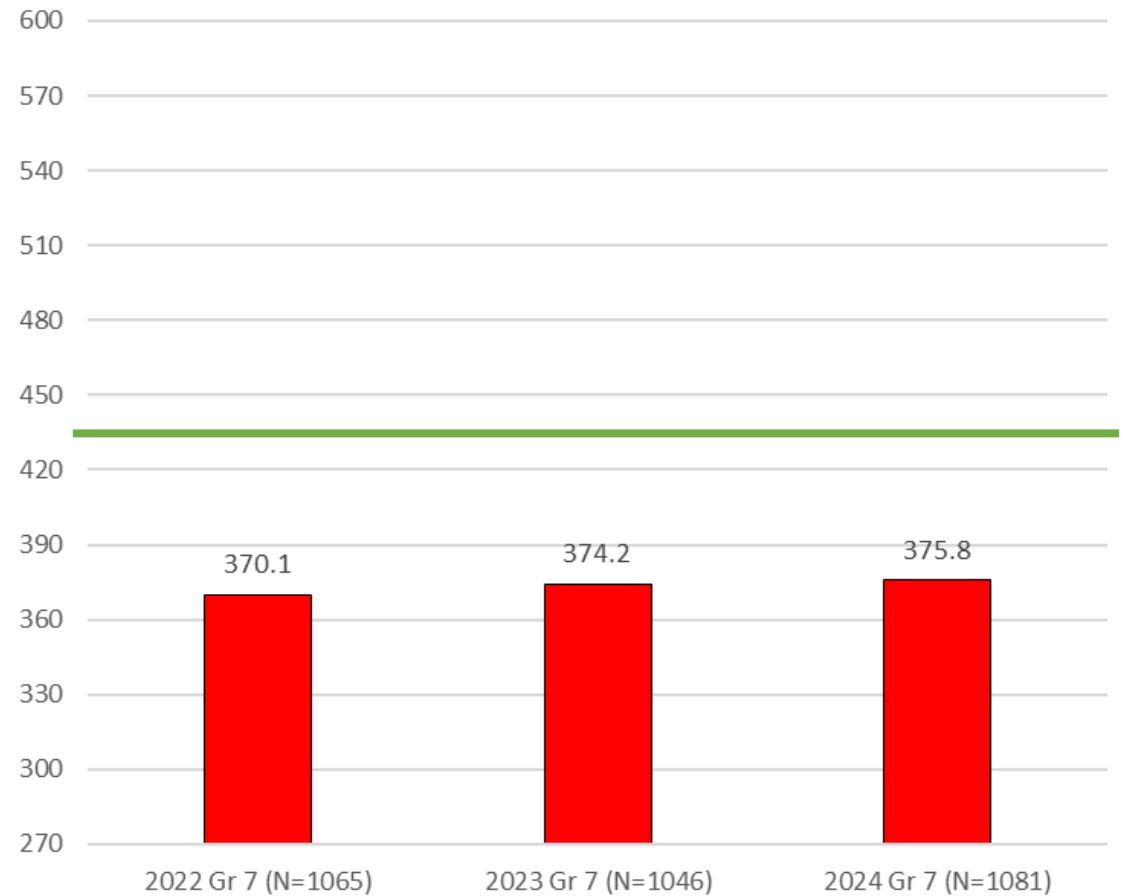


7th Grade MAP Math - 3 Yr Performance Levels



	2022 Gr 7 (N=1065)	2023 Gr 7 (N=1046)	2024 Gr 7 (N=1081)
Advanced	3.66%	5.07%	4.53%
Proficient	6.20%	5.74%	6.75%
Basic	21.03%	21.61%	23.13%
Below Basic	69.11%	67.59%	65.59%

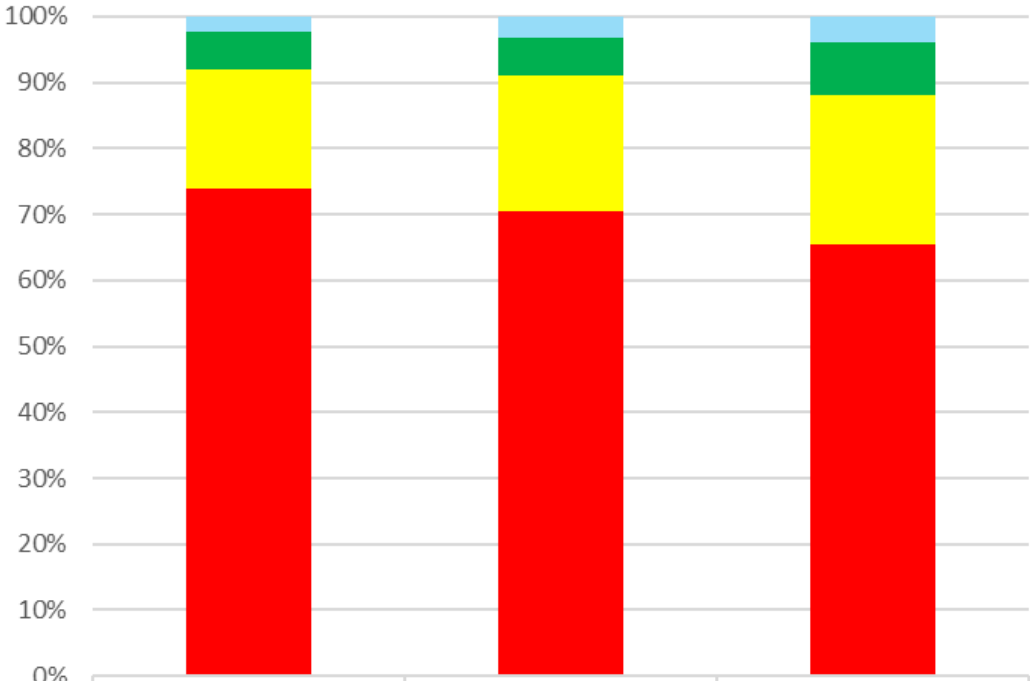
7th Grade MAP Math - 3 Year Mean Scaled Scores



District MAP GLA Math Data - 3 Year Historical



8th Grade MAP Math - 3 Yr Performance Levels



	2022 Gr 8 (N=1061)	2023 Gr 8 (N=1004)	2024 Gr 8 (N=1037)
Advanced	2.36%	3.29%	3.86%
Proficient	5.56%	5.58%	8.00%
Basic	18.28%	20.72%	22.76%
Below Basic	73.80%	70.42%	65.38%

8th Grade MAP Math - 3 Year Mean Scaled Scores

